



WASIP

TRUSTED NAME IN PERSONAL PROTECTIVE EQUIPMENT



EYE & FACE PROTECTION

Contact your local distributor.

SAFETY GLASSES

TRINITY

Part #	Lens Colour	Package
W121300	Clear	12/Box 144/Case
W121302	Grey	
W121304	Amber	
W121306	Silver Mirror	
W121308	Indoor/Outdoor	

- Adjustable ratchet temples
- Extremely lightweight
- Temples come with soft comfort pads
- Polycarbonate scratch resistant lens with molded nose bridge
- Lens base curve 10 mm
- Lens offers 99% protection from harmful ultra violet radiation
- High impact protection
- Meets CAN/CSA Z94.3/ANSI Z87.1



TREND

Part #	Lens Colour	Package
W122100	Clear	12/Box 144/Case
W122102	Grey	
W122104	Amber	
W122106	Silver Mirror	
W122108	Indoor/Outdoor	

- Stylish wrap around lens
- Soft adjustable nose pad increase comfort
- Soft grip temple pads
- Lens base curve 10 mm
- Polycarbonate scratch resistant lens offers 99% protection from harmful ultra violet radiation
- High impact protection
- Meets CAN/CSA Z94.3/ANSI Z87.1



VIBE

Part #	Lens Colour	Package
W130300	Clear	12/Box 144/Case
W130302	Grey	
W130306	Silver Mirror	
W130318	Copper	

- Lightweight wraparound frame
- Adjustable ratchet temples
- Soft nose pad increase comfort
- High impact scratch resistant dual polycarbonate lens
- Lens base curve 8 mm
- Lens offers 99% protection from harmful ultra violet radiation
- Meets CAN/CSA Z94.3/ANSI Z87.1





GROOVE

Part #	Lens Colour	Package
W131100	Clear	12/Box 144/Case
W131102	Grey	
W131104	Amber	
W131106	Indoor/Outdoor	
W131108	Silver Mirror	

- Lightweight wraparound frame
- Ratchet temples
- Advance nose pad with ridge design for increased comfort and personal adjustment
- Soft padded temples for secure fit
- Scratch resistant single polycarbonate lens
- Lens base curve 8 mm
- Lens offers 99% protection from harmful ultra violet radiation
- Meets CAN/CSA Z94.3/ANSI Z87.1

TWISTER

Part #	Lens Colour	Package
W20800	Clear	12/Box 144/Case
W20802	Grey	
W20804	Amber	
W20807	Blue	
W20808	Indoor/Outdoor	
W208051	Medium Green	
W208052	Dark Green	

- Low profile lightweight design
- Universal nose bridge
- Scratch resistant poly carbonate lens
- Lens base curve 9 mm
- Lens offers 99% protection from harmful ultra violet radiation
- High impact protection
- Meets CAN/CSA Z94.3/ANSI Z87.1



THE TEMP

Part #	Lens Colour	Package
W1080	Clear	12/Box 144/Case
W1082	Grey	
W1084	Amber	
W10830	IR Shade 3.0	
W10850	IR Shade 5.0	

- Molded brow guard, nose bridge with vented side shields
- Lightweight frame
- High impact polycarbonate lens and temples
- Lens base curve 4 mm
- Lens offers 99% protection from harmful ultra violet radiation
- Meets CAN/CSA Z94.3/ANSI Z87.1

TEMP LITE

Part #	Lens Colour	Package
W1090	Clear	12/Box 300/Case
W1092	Grey	

- Molded wrap-around lens
- Extremely lightweight
- High impact scratch resistant polycarbonate lens and temples
- Polycarbonate lens and temples
- Lens base curve 9 mm
- Lens offers 99% protection from harmful ultra violet radiation
- Meets CAN/CSA Z94.3/ANSI Z87.1



W500400



W504502



W500404



W504506



W500407



W504508

SCORPION

Part #	Description	Package
W90110	Black frame, Clear lens	12/Box 144/Case
W90110A	Black frame, Clear anti-fog lens	
W90110U	Black frame, Clear uncoated lens	
W90112	Black frame, Grey lens	
W90112A	Black frame, Grey anti-fog lens	
W90112U	Black frame, Grey uncoated lens	
W90114	Black frame, Amber Lens	
W90114A	Black frame, Amber anti-fog lens	
W90116	Black frame, Silver mirror lens	
W90210	Blue frame, Clear lens	
W901130	Black frame, IR Shade 3.0	
W901150	Black frame, IR Shade 5.0	

- Polycarbonate scratch resistant lens includes molded side shield
- Nylon frame with adjustable temple and molded brow guard for increased protection
- Traditional design fits a wide variety of faces
- Lens base curve 4 mm
- Lens offers 99% protection from harmful ultra violet radiation
- High impact protection
- Meets CAN/CSA Z94.3/ANSI Z87.1



W1090



W1092

VORTEX BLUE/SILVER FRAME

Part #	Lens Colour	Package
W500400	Clear	12/Box 144/Case
W500402	Grey	
W500404	Amber	
W500407	Blue Mirror	
W500408	Indoor/Outdoor	

BLACK/SILVER FRAME

Part #	Lens Colour	Package
W504500	Clear	12/Box 144/Case
W504502	Grey	
W504504	Amber	
W504506	Silver Mirror	
W504508	Indoor/Outdoor	

- Wrap around sports style design
- Adjustable ratchet temple
- Soft grip temple
- Integral molded nosepiece, brow guard and side shield
- Scratch resistant polycarbonate lens
- Lens base curve 8.75 mm
- Lens offers 99% protection from harmful ultra violet radiation
- High impact lens
- Meets CAN/CSA Z94.3/ANSI Z87.1



W90110



W90210



W90112



W901130



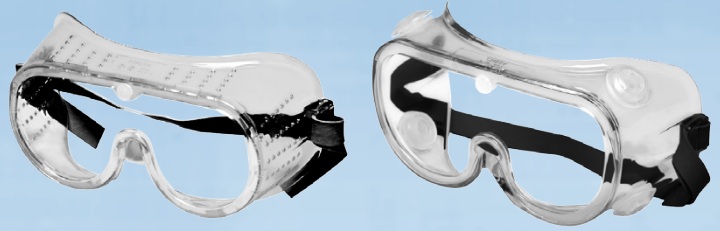
W90114



W901150

SAFETY GOGGLES

Part #	Description	Package
150000	Clear Perforated Frame	36/Box 144/Case
150010	Chemical Splash Vent	
150020	Anti-Fog Perforated Frame	
150030	Anti-Fog Chemical Splash Vent	
150070	Clear Anti-Fog Ventless Frame	



150000

150010



150070

- Generous sizing and protection
- Can be worn over prescription glasses
- Neoprene headband provides comfort and durability
- Regular and anti-fog lens coatings
- Available in perforated, chemical splash vent and ventless frame styles
- Meets CAN/CSA Z94.3/ANSI Z87.1

ACCESSORIES

KLIP-ON LENS



Part #	Lens Colour
140010	Clear
140012	Grey
140300	IR Shade 3.0
140500	IR Shade 5.0



140010

140012

140300

140500

- Designed to fit over most protective eyewear frames
- Durable
- Easy to use
- Clip on design
- Provides temporary protection against ultra violet radiation
- IR shades available for use in a welding environment or exposure to infrared light



460080



460030

EYE CORDS

Part #	Description
460030	Blue Economy Elastic Nylon Strap
460080	Black Deluxe Cotton Cord

- Comfortable strap keeps glasses safe and secure
- Fits all glasses/sunglasses with an adjustable lanyard loop end
- Quickly attaches to eyeglasses
- Convenient and easy to use
- Durable
- Length of strap measures

SIDE SHIELDS

Part #	Package
130010	50 Pairs/Bag



- Provides protection from all angles
- Designed to fit all types of eyewear
- Quickly attaches to eyeglasses
- No tools or extra parts required
- Clear, flexible design
- Convenient and easy to use
- Lightweight
- Side protection against light hazards such as dust, chemical splash and other eye irritants



460160



460150

EYEGLOSS CASES

Part #	Description
460150	Eyeglass Bag, Universal Pouch with Drawstring
460160	Eyeglass Case, Nylon with Belt Loop

- Compact and lightweight
- Durable
- Protects glasses from scuffs and scratches
- Nylon case with belt loop



DISPOSABLE FACESHIELD

Part #	Package
W70FP05	5/Bag

- Lightweight, disposable face shields with elastic strap
- Breathable foam headband ensures a comfortable fit
- Anti-fog and anti-static treatment
- Infectious Disease Control shield
- Direct splash protection
- One size fits all
- Latex Free
- Applications: Dental, emergency response (EMS), caregivers, paramedics, medical clinics, vets, food processing, painters

WELDING EQUIPMENT



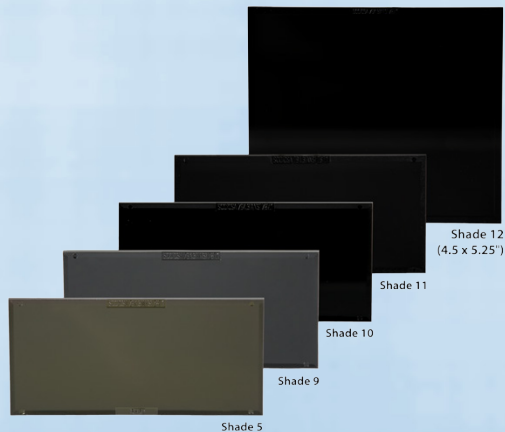
WELDING HELMET

Part #	Description
231950	Welding Helmet, 1/Bag

REPLACEMENT PARTS FOR WELDING HELMET

Part #	Description
232010	Ratchet Headgear
232050	Lens Spring, 2 x 4"

- Strong, lightweight and flexible
- Designed for comfort
- Heat and moisture resistant
- One piece seamless construction
- Comes with Shade 11 filter
- Ratchet headgear assures quick adjustment
- Meets CAN/CSA Z94.3/ANSI Z87.1



FACESHIELDS FORMED FACESHIELDS

Part #	Description	Size
243830	Clear Polypropionate	6 x 15.5 x .060"
243920	Clear Polycarbonate	8 x 15.5 x .060"
243960	Clear Polycarbonate	8 x 15.5 x .060"
2439230	Shade 3.0 Polycarbonate	8 x 15.5 x .080"
2439250	Shade 5.0 Polycarbonate	8 x 15.5 x .080"
244410	Metal Mesh	8 x 15.5 x .060"

FLAT FACESHIELDS

243700	Clear PCTG	8 x 15.5 x .040"
243710	Clear PCTG	10 x 15.5 x .040"
243720	Medium Green PCTG	8 x 15.5 x .040"
243750	Clear PCTG	9 x 18.25 x .040"
243990	Clear Polycarbonate	8 x 15.5 x .040"
244000	Clear Polycarbonate	8 x 15.5 x .060"

- Molded from high strength polypropionate, polycarbonate or PCTG
- Provides frontal and lateral protection
- Easy to attach to headgear and bracket

POLYCARBONATE FILTER LENSES

Part #	Description	Size
220920	Shade 5	2 x 4.25"
220940	Shade 9	2 x 4.25"
220950	Shade 10	2 x 4.25"
220960	Shade 11	2 x 4.25"
221160	Shade 6	50mm Round
221180	Shade 12	4.5 x 5.25"

POLYCARBONATE COVER LENSES

Part #	Description	Size
22050E	Clear Lens	2 x 4.25"
22057PE	Clear Lens	4.5 x 5.25"



HEADGEAR AND BRACKETS

Part #	Description
244065	Headgear
244041	Headgear, Clear Visor & Chin Protector Combo
310800	Aluminum Bracket
310810	Dielectric Bracket

- 4" Spark Guard on headgear
- Crown strap on headgear has a ratchet type suspension for easy adjustment
- Window can be raised and held at any position
- Pivoting guard allows visor to lift up when not in use
- Brackets designed to attach to hard hats with universal locking cams to secure visor
- Brackets fits most conventional hard hats
- Easy window attachment and removal

WELDING GOGGLES

Part #	Description
210770	50 mm Welders cup goggle with IR shade 5.0 lens
210700	2 x 4.25" Lift front goggle with IR shade 5.0 lens
210710	2 x 4.25" Fixed front goggle with IR shade 5.0 lens

- Designed to deliver desired strength, flexibility, and safety with the minimum weight possible
- Vents to minimize fogging and perspiration
- Generous sizing for all day comfort
- Made to withstand the rigors of heavy workshop

WELDING SAFETY GLASSES

Part #	Description	Style
W10830	IR Shade 3.0	Temp
W10850	IR Shade 5.0	Temp
W901130	IR Shade 3.0	Scorpion
W901150	IR Shade 5.0	Scorpion

- Designed to deliver desired strength, flexibility, and safety with the minimum weight possible
- High impact protection
- Polycarbonate scratch resistant lens include side shields
- Traditional design fits a wide variety of faces
- Lens offers 99% protection from harmful ultra violet radiation
- Meets CAN/CSA Z94.3/ANSI Z87.1



LENS CLEANING PRODUCTS



LENS CLEANING SOLUTION

Part #	Description
200040	125ml Solution with Sprayer
200136	250ml Solution with Sprayer
20003P	500ml Boston round Solution with Sprayer
200080	500ml Cylindrical Solution with Sprayer
200020	4L Solution
200090	Spray Pump for 200136
200050	Spray Pump for 20003P

- Anti-fog/anti-static solution leaves no residue after proper application
- Suitable for glass or plastic
- Quality solution for cleaning glasses, goggles, face shields and electronic devices



LENS CLEANING TOWELETTES

Part # 200200

- Sturdy corrugated cardboard design with pull out bottom for easy dispensing
- Premoistened individually wrapped towelettes
- Compact, pocket size solution
- Anti-fog/anti-static solution leaves no residue after proper application
- Suitable for glass or plastic
- Quality solution for cleaning glasses, goggles, face shields and electronic devices



LENS CLEANING TISSUES

Part # 200190

- Soft, lint-free, highly absorbent tissue

LENS CLEANING STATIONS

- Soft, lint-free, highly absorbent tissue
- Wall mountable for easy access
- Anti-fog/anti-static solution leaves no residue after proper application
- Suitable for glass or plastic
- Quality solution for cleaning glasses, goggles, face shields and electronic devices



Custom imprinting of company name and logo available.

METAL LENS CLEANING STATION

Part # 200010

- Heavy duty metal dispenser withstands harsh conditions over extended periods of use
- Wall mountable for easy access
- Station comes complete with (2) 500ml lens cleaner and 1 box of tissue
- Lock and key included



200000



200050

DISPOSABLE LENS CLEANING STATION

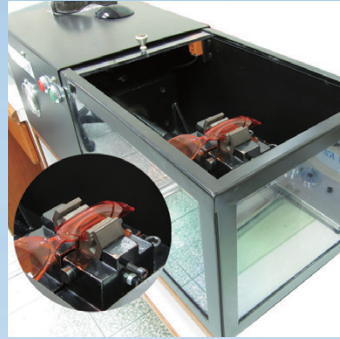
Part #	Description
200000	Disposable Station with (1) 250ml lens cleaner and 2 boxes of tissues
200050	Disposable Station with (1) 500ml lens cleaner and 4 boxes of tissues

- Heavy-duty corrugate construction withstands harsh conditions over extended periods of use
- Compact size and high tissue count makes it perfect for high traffic areas
- No maintenance required

TESTING METHODS



MELT FLOW INDEXER
Tests the quality of raw materials.



ADHESION TEST
Evaluates the adhesion of coatings to lenses.



HAZE TESTER
Measures the haze (light scattering) and light transmitting properties of the lenses.



DEFINITION TEST
Checks the optical quality, definition, refractive power, and astigmatism power test.



HIGH MASS IMPACT TEST
Measures for the level of protection against relatively heavy objects traveling at various speeds.

Our eyewear is manufactured to the highest safety and quality standards from raw materials testing to impact and scratch resistance testing.
Meets CAN/CSA Z94.3 ANSI Z87.1



LENS ANALYZER
Advanced testing of refractive, astigmatism and optical quality.



PRISM IMBALANCE TEST
Inspects prism power and imbalance of the lenses.



FALLING SAND TEST
Measures level of resistance to surface damage by fine particles.



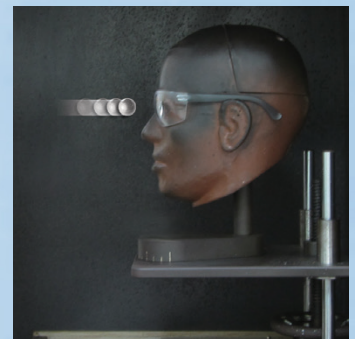
SCRATCH RESISTANCE
Measures the scratch resistance of the lenses.



STRESS TEST
Checks for quality and stress on the lenses.



SPECTROPHOTOMETER
Examines the ultraviolet radiation and wavelengths of coatings.



HIGH VELOCITY IMPACT TEST
Determines the capability of a lens to resist impact from high velocity, low mass projectiles.

WASIP A PREFERRED CHOICE BY ALL PROFESSIONALS



· FIRST AID · RAINWEAR · WORK CLOTHING · EYE & FACE PROTECTION · TRAFFIC SAFETY · SIGNS · WELDING PROTECTION
· RESPIRATORY · HEARING PROTECTION · FLASHLIGHTS · DOMES & MIRRORS · GLOVES · WORK PLACE SAFETY

Who are we?

WASIP is your #1 source for Personal Protective Equipment (PPE), First Aid Kits and First Aid Supplies, Protective Work Garments and Workplace Safety Products.

Experienced leader in the Canadian market

We understand our customers business, providing market leading products at competitive prices.

Innovative Product Solutions

WASIP believes in continuous improvement of efficiencies and innovative product solutions that will offer consumers the highest quality product.

Our commitment to our customers

We are constantly evaluating our product assortment to ensure that our business model is exceeding our customers' expectations. We pride ourselves on having the highest level of after sales support. We provide seamless service that is second to none.

Make that connection...

Contact us today at 1-800-268-3572 or visit us online at www.wasip.com for more information.

All WASIP products are available through a network of distributors that service all industries.



WASIP
LTD.

3771 Victoria Park Ave.
Toronto ON, M1W 3Z5



(416) 297 5020
1 (800) 268 3572



(416) 297 0109
1 (800) 263 9049



wasip.com
sales@wasip.com