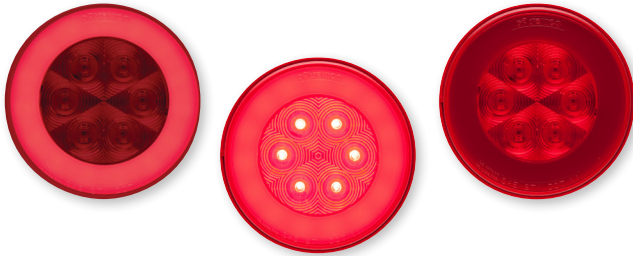


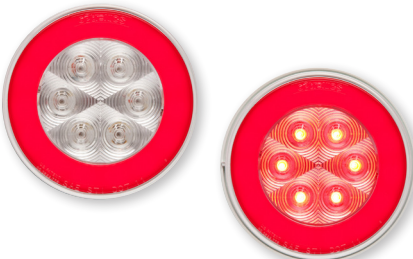
GloLight™

optronics®

America's Largest Offshore Vehicle Lighting Manufacturer



STL101RB/RMB/RHMB



STL101RCB/RCMB



STL101RFB/RFMB



STL101RCFB/RCFMB

BULK P/N	POLYPACK P/N	DESCRIPTION	QTY
4" STOP/TURN/TAIL - 21 DIODES			
STL101RB	STL101RBP	PL-3 connection	10
STL101RKB	STL101RKBP	Light, A45GB grommet, A47PB pigtail	10
STL101RMB	STL101RMBP	Weathertight connection	10
STL101RHMB	STL101RHMBP	Hard wired, weathertight connection	10
STL101RFB	STL101RFBP	Flange mount, PL-3 connection	10
STL101RFMB	STL101RFMBP	Flange mount, weathertight connection	10
STL101RCB	STL101RCBP	Clear lens, PL-3 connection	10
STL101RCMB	STL101RCMBP	Clear lens, weathertight connection	10
STL101RCFB	STL101RCFBP	Clear lens, flange mount, PL-3 connection	10
STL101RCFMB	STL101RCFMBP	Clear lens, flange mount, weathertight connection	10

ACCESSORIES

A45GB	A45GBP	Grommet for 4" sealed lights	50
A45PB	A45PBP	3-wire PL-3 pigtail, straight	100
A47PB	A47PBP	3-wire PL-3 pigtail, right angle	100
A45PMB	A45PMBP	Weathertight pigtail	100
AL45PWTB	AL45PWTBP	Weathertight pigtail/PL-3 adaptor	50
A101TRSSB	A101TRSSBP	Stainless steel trim ring for flange mount STL101 series lights	50

FMVSS Red S2 T2 I6

MATERIALS Polycarbonate lens and housing

VOLT/AMP 12.8VDC - Stop .375A / Tail .145A

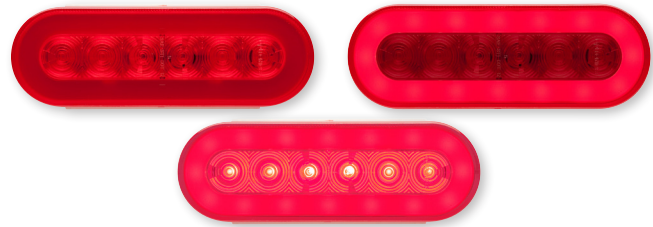
DIMENSIONS STL101 Grommet Mount: 4.313" diameter
STL101 Flange Mount: 5.48" diameter

Weather tight connection

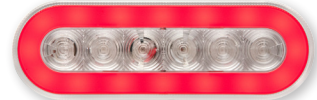


Standard PL3 connection

Industry-standard connections
Easy retrofit of incandescent or other LED lights



STL111RB/RMB/RHB



STL111RCB/RCMB



STL111RFB/RFMB



STL111RCFB/RCFMB

BULK P/N	POLYPACK P/N	DESCRIPTION	QTY
6" STOP/TURN/TAIL - 22 DIODES			
STL111RB	STL111RBP	PL-3 connection	10
STL111RMB	STL111RMBP	Weathertight connection	10
STL111RFB	STL111RFBP	Flange mount, PL-3 connection	10
STL111RFMB	STL111RFMBP	Flange mount, weathertight connection	10
STL111RHB	STL111RHBP	Hard wired	10
STL111RCB	STL111RCBP	Clear lens, PL-3 connection	10
STL111RCMB	STL111RCMBP	Clear lens, weathertight connection	10
STL111RCFB	STL111RCFBP	Clear lens, flange mount, PL-3 connection	10
STL111RCFMB	STL111RCFMBP	Clear lens, flange mount; weathertight connection	10
TLL112RK	Retail set: (2) STL111RB, grommets, plugs, Try Me package		2
ACCESSORIES			
A70GB	A70GBP	Grommet for 6" oval sealed lights	50
A45PB	A45PBP	3-wire PL-3 pigtail, straight	100
A47PB	A47PBP	3-wire PL-3 pigtail, right angle	100
A45PMB	A45PMBP	Weathertight pigtail	100
AL45PWTB	AL45PWTBP	Weathertight pigtail/PL-3 adaptor	50
A111TRSSB	A111TRSSBP	Stainless steel trim ring for flange mount STL111 series lights	50

FMVSS	Red S2 T2 I6
MATERIALS	Polycarbonate lens and housing
VOLT/AMP	12.8VDC - Stop .59A / Tail .295A
DIMENSIONS	STL111 Grommet Mount: 6.5" W x 2.25" H STL111 Flange Mount: 7.5" W x 3.3" H

LED LIFETIME WARRANTY
NO BULBS TO REPLACE EVER!

- **Lifetime LED Warranty** - No bulbs to replace – ever!
- **Low amp draw** reduces load on electrical system
- **100% waterproof** and maintenance free
- **Quicker response time** increases safety and visibility



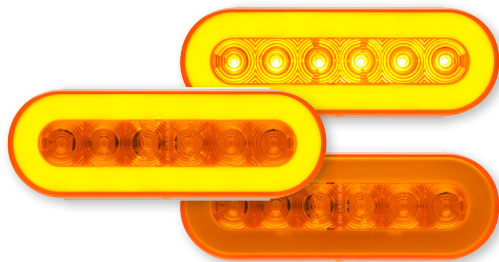
TLL112RK



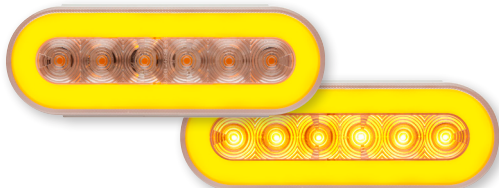
STL101AB



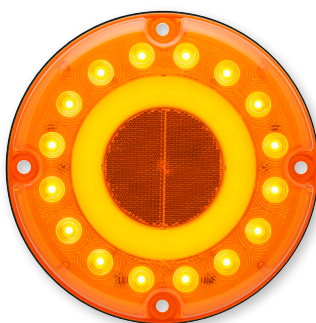
STL101ACB



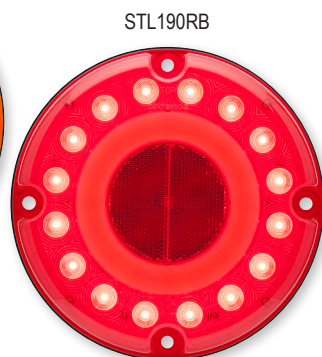
STL111AB



STL111ACB



STL190AB



STL190RB

BULK P/N	POLYPACK P/N	DESCRIPTION	QTY
4" PARKING/TURN SIGNAL - 21 DIODES			

STL101AB	STL101ABP	PL-3 connection	10
STL101ACB	STL101ACBP	Clear lens, PL-3 connection	10

ACCESSORIES

A45GB	A45GBP	Grommet for 4" sealed lights	50
A45PB	A45PBP	3-wire PL-3 pigtail, straight	100
A47PB	A47PBP	3-wire PL-3 pigtail, right angle	100

FMVSS	I6 P
MATERIALS	Polycarbonate lens and housing
VOLT/AMP	12.8VDC - Turn .315A / Park .143A
DIMENSIONS	4.313" diameter

BULK P/N	POLYPACK P/N	DESCRIPTION	QTY
6" PARKING/TURN SIGNAL - 22 DIODES			

STL111AB	STL111ABP	PL-3 connection	10
STL111ACB	STL111ACBP	Clear lens; PL-3 connection	10

ACCESSORIES

A70GB	A70GBP	Grommet for 6" oval sealed lights	50
A45PB	A45PBP	3-wire PL-3 pigtail, straight	100
A47PB	A47PBP	3-wire PL-3 pigtail, right angle	100

FMVSS	I6 P
MATERIALS	Polycarbonate lens and housing
VOLT/AMP	12.8VDC - Turn .515A / Park .27A
DIMENSIONS	6.5" W x 2.25" H

BULK P/N	POLYPACK P/N	DESCRIPTION	QTY
7" STOP/TURN/TAIL - 32 DIODES			

STL190RB	STL190RBP	Stop/turn/tail light	5
----------	-----------	----------------------	---

7" PARKING/TURN SIGNAL - 32 DIODES

STL190AB	STL190ABP	Parking/turn signal	5
----------	-----------	---------------------	---

FMVSS	S2 I6 T2 P2 A; Yellow I6 P2 A
MATERIALS	Polycarbonate lens and housing
VOLT/AMP	Red: 12.8VDC - Stop .340A / Tail .135A Yellow: 12.8VDC - Turn .410A / Park .072A
DIMENSIONS	7" diameter x 1.625" D



STL178RCB



STL178RB/RFPB

BULK P/N	POLYPACK P/N	DESCRIPTION	QTY
6" SURFACE MOUNT STOP/TURN/TAIL - 22 DIODES			
STL178RB	STL178RBP	Hard wired	10
STL178RFPB	STL178RFPBP	Hard wired, female PL-3 plug	10
STL178RCB	STL178RCBP	Clear lens, hard wired	10
STL178RCCFPB	STL178RCCFPBP	Clear lens and ring	10
6" SURFACE MOUNT UTILITY LIGHT - 22 DIODES			
UCL178RFP2B	UCL178RFP2BP	Utility light	10
ACCESSORIES			
A178TRSSB	A178TRSSBP	Stainless steel trim ring	50



STL178RCCFPB



UCL178RFP2B

FMVSS	S2 T2 I6 (except UCL178)
MATERIALS	Polycarbonate lens and housing
VOLT/AMP	12.8VDC - Stop .59A / Tail .295A
DIMENSIONS	7.5" W x 3.3" H x 1.1" D



STL179RB

BULK P/N	POLYPACK P/N	DESCRIPTION	QTY
17" THINLINE STOP/TURN/TAIL - 28 DIODES			
STL179RB	STL179RBP	Hard wired	10
ACCESSORIES			
A79CB	A79CBP	Chrome mounting base	10

FMVSS	S T I
MATERIALS	Polycarbonate lens and housing
VOLT/AMP	12.8VDC - Stop .634A / Tail .445A
DIMENSIONS	17" W x 1.375" H x 1" D (16.125" mounting centers)



STL109RB

STL108RB



TLL190RK

BULK P/N	POLYPACK P/N	DESCRIPTION	QTY
COMBINATION TAIL LIGHTS - 25 DIODES			
STL108RB	STL108RBP	Passenger side	10
STL109RB	STL109RBP	Driver side with 3-LED license light	10
TLL190RK	Retail set: STL108RB, STL109RB, hardware, Try Me package		2

FMVSS	Passenger side A I S T, P2 A; Driver side A I S T, P2 A, L
MATERIALS	Acrylic lens, ABS housing
VOLT/AMP	12.8VDC - Stop .310A / Tail .230A (License .030A)
DIMENSIONS	5.031" W x 4.563" H x 2.625" D (2" mounting centers)



STL116RB



STL117RB



TLL170RK

BULK P/N	POLYPACK P/N	DESCRIPTION	QTY
LOW PROFILE TAIL LIGHTS - 28 DIODES			
STL116RB	STL116RBP	Passenger side	10
STL117RB	STL117RBP	Driver side with 6-LED license light	10
TLL170RK	Retail set: STL116RB, STL117RB, hardware, Try Me package		2

FMVSS	Passenger side A I S T, P2 A; Driver side A I S T, P2 A, L
MATERIALS	Acrylic lens, ABS housing
VOLT/AMP	12.8VDC - Stop .465A / Tail .270A (License .063A)
DIMENSIONS	8" W x 2.9" H x 2.6" D (2" mounting centers)



STL161RB/RLB

BULK P/N	POLYPACK P/N	DESCRIPTION	QTY
COMBINATION TAIL/BACK-UP LIGHTS - 36 DIODES			
STL161RB	STL161RBP	Passenger side	5
STL161RLB	STL161RLBP	Driver side with license light	5

FMVSS	Passenger A I6 (2)R S2 (3)T; Driver A I6 (2)R S2 (3)T L
MATERIALS	Acrylic lens, ABS housing
VOLT/AMP	12.8VDC - Stop .30A, Tail .19A, Back-up .21A
DIMENSIONS	5.813" W x 6.75" H x 2.688" D (2" mounting centers)

BULK P/N	POLYPACK P/N	DESCRIPTION	QTY
4" LED BACK-UP LIGHT - 21 DIODES			
BUL101CB	BUL101CBP	Standard connection	10
BUL101CKB	BUL101CKBP	Light, A45GB grommet, A49PB pigtail	10
ACCESSORIES			
A45GB	A45GBP	Grommet for 4" sealed lights	50
A45CB	A45CBP	2-wire pigtail, straight	100
A49PB	A49PBP	2-wire pigtail, right angle	100

FMVSS	(2)R
MATERIALS	Polycarbonate lens and housing
VOLT/AMP	12.8VDC - .425A
DIMENSIONS	4.313" diameter



BUL101CB

BULK P/N	POLYPACK P/N	DESCRIPTION	QTY
6" LED BACK-UP LIGHT - 22 DIODES			
BUL111CB	BUL111CBP	Standard connection	10
ACCESSORIES			
A70GB	A70GBP	Grommet for 6" oval sealed lights	50
A45CB	A45CBP	2-wire pigtail, straight	100
A49PB	A49PBP	2-wire pigtail, right angle	100

FMVSS	(2)R
MATERIALS	Polycarbonate lens and housing
VOLT/AMP	12.8VDC - .386A
DIMENSIONS	6.5" W x 2.375" H



BUL111CB

BULK P/N	POLYPACK P/N	DESCRIPTION	QTY
SURFACE MOUNT LED DOME LIGHTS			
UCL160CB	UCL160CBP	6-LED, 3" diameter, 3/8" thick	20
ILL124CB	ILL124CBP	24-LED, 6 1/8" diameter, 7/8" thick	10

MATERIALS	Polycarbonate lens and housing		
VOLT/AMP	UCL160:	12.8VDC - .15A	
	ILL124:	12.8VDC - .566A	
DIMENSIONS	UCL160:	3" diameter x .375" D	
	ILL124:	6.125" diameter x .875" D	



UCL160CB



ILL124CB

NON-DIRECTIONAL 



PC Rated

BULK P/N	POLYPACK P/N	DESCRIPTION	QTY
PC RATED UNI-LITE™ 3/4" MARKER/CLEARANCE LIGHTS - 2 DIODES			
MCL110AB	MCL110ABP	Yellow light only	50
MCL110AKB	MCL110AKBP	Yellow kit with grommet	50
MCL110AKBF	MCL110AKBFP	Yellow kit with grommet, .156 female barrels	50
PC RATED UNI-LITE™ 3/4" MARKER/CLEARANCE LIGHTS - 2 DIODES			
MCL110RB	MCL110RBP	Red light only	50
MCL110RKB	MCL110RKBP	Red kit with grommet	50
MCL110RKBF	MCL110RKBF	Red kit with grommet, .156 female barrels	50
IDENTIFICATION LIGHT BAR			
MCL1922RB	MCL1922RBP	ID light bar, black ABS base	10

FMVSS PC rated, mounted in any direction
MATERIALS Polycarbonate lens and housing
VOLT/AMP 12.8VDC - .052A
DIMENSIONS .73" diameter x .938" D



MCL1922RB



PC Rated

BULK P/N	POLYPACK P/N	DESCRIPTION	QTY
PC RATED UNI-LITE™ 3/4" MARKER/CLEARANCE LIGHTS - 2 DIODES			
MCL111AB	MCL111ABP	Yellow light only	50
MCL111AKB	MCL111AKBP	Yellow kit with grommet	50
MCL111AKPG	MCL111AKPGP	Yellow kit with grommet, .180 male bullets	50
MCL111AKFPG	MCL111AKFPGP	Yellow kit with grommet, .156 female bullets	50
MCL121AK9PVG	MCL121AK9PVG	Yellow kit with closed grommet, supplemental turn function, 9" lead, .180 male bullets	20
PC RATED UNI-LITE™ 3/4" MARKER/CLEARANCE LIGHTS - 2 DIODES			
MCL111RB	MCL111RBP	Red light only	50
MCL111RKB	MCL111RKBP	Red kit with grommet	50
MCL111RKPG	MCL111RKPGP	Red kit with grommet, .180 male bullets	50
MCL111RKFP	MCL111RKFP	Red kit with grommet, .156 female bullets	50
MCL121RK9PVG	MCL121RK9PVG	Red kit with closed grommet, supplemental turn function, 9" lead, .180 male bullets	20

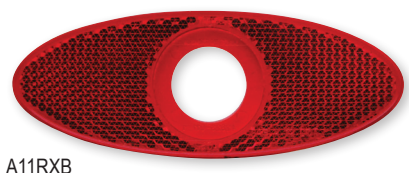
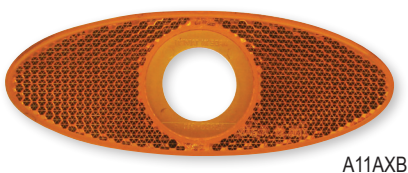
FMVSS PC
MATERIALS Polycarbonate lens and housing
VOLT/AMP 12.8VDC - Red .052A, Yellow .085A
DIMENSIONS .75" diameter x .813" D

BULK P/N	POLYPACK P/N	DESCRIPTION	QTY
P2 RATED UNI-LITE™ 3/4" MARKER/CLEARANCE LIGHTS - 1 DIODE			
MCL112AB	MCL112ABP	Yellow light only	50
MCL112AKB	MCL112AKBP	Yellow kit with grommet	50
P2 RATED UNI-LITE™ 3/4" MARKER/CLEARANCE LIGHTS - 1 DIODE			
MCL112RB	MCL112RBP	Red light only	50
MCL112RKB	MCL112RKBP	Red kit with grommet	50



FMVSS	P2
MATERIALS	Polycarbonate lens and housing
VOLT/AMP	12.8VDC - Red .05A, Yellow .075A
DIMENSIONS	.75" diameter x .813" D

BULK P/N	POLYPACK P/N	DESCRIPTION	QTY
IDENTIFICATION LIGHT HARNESS			
MCL122RK3B	MCL122RK3BP	Identification light harness, (3) red P2 lights, supplemental stop function, .180 male bullets	20



ACCESSORIES			
A11GB	A11GBP	Grommet, open back	100
A12GB	A12GBP	Sealing grommet, .070-.125"	100
A14GB	A14GBP	Sealing grommet, .125-.250"	100
A11VGB	A11VGBP	Closed back grommet	100
A11PB	A11PBP	Snap-in flange, black	100
A11SSB	A11SSBP	Stainless steel grommet cover	120
A11AXB	A11AXBP	Yellow reflector	100
A11RXB	A11RXBP	Red reflector	100



BULK P/N	POLYPACK P/N	DESCRIPTION	QTY
2" SEALED MARKER/CLEARANCE LIGHTS - 6 DIODES			
MCL155AB	MCL155ABP	Yellow, grommet mount	20

2" SEALED MARKER/CLEARANCE LIGHTS - 6 DIODES			
MCL155RB	MCL155RBP	Red, grommet mount	20

ACCESSORIES			
A46PB	A46PBP	2-wire PL-10 pigtail	100
A54GB	A54GBP	Flush mount grommet	100
A55CB	A55CBP	Chrome trim ring	20

FMVSS	P2
MATERIALS	Polycarbonate lens and housing
VOLT/AMP	12.8VDC - Red .065A; Yellow .096A
DIMENSIONS	2" diameter x 1.16" D



BULK P/N	POLYPACK P/N	DESCRIPTION	QTY
2" SEALED MARKER/CLEARANCE LIGHTS - 6 DIODES			
MCL155AFB	MCL155AFBP	Yellow, flange mount	20

2" SEALED MARKER/CLEARANCE LIGHTS - 6 DIODES			
MCL155RFB	MCL155RFBP	Red, flange mount	20

ACCESSORIES			
A46PB	A46PBP	2-wire PL-10 pigtail	100

FMVSS	P2
MATERIALS	Polycarbonate lens and housing
VOLT/AMP	12.8VDC - Red .065A; Yellow .096A
DIMENSIONS	2.938" diameter x .938" D



BULK P/N	POLYPACK P/N	DESCRIPTION	QTY
2.5" MARKER/CLEARANCE LIGHTS - 9 DIODES			
MCL157AB	MCL157ABP	Yellow, grommet mount	20

2.5" MARKER/CLEARANCE LIGHTS - 9 DIODES			
MCL157RB	MCL157RBP	Red, grommet mount	20

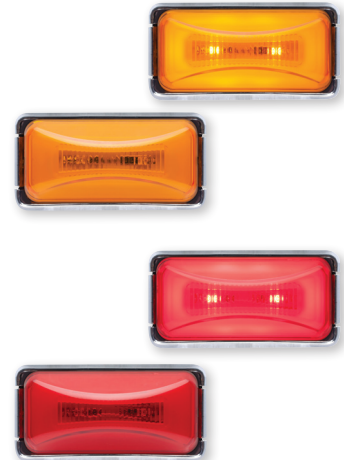
ACCESSORIES			
A46PB	A46PBP	2-wire PL-10 pigtail	100
A55GB	A55GBP	Flush mount grommet, open back	50
A56GB	A56GBP	Recess mount grommet, closed back	100
A57GB	A57GBP	Recess mount grommet, open back	50
A57CB	A57CBP	Chrome trim ring	20

FMVSS	P2
MATERIALS	Polycarbonate lens and housing
VOLT/AMP	12.8VDC - .099A
DIMENSIONS	2.5" diameter x 1.125" D

So Unique, It Has a Patent Pending

BULK P/N	POLYPACK P/N	DESCRIPTION	QTY
MINI MARKER/CLEARANCE LIGHTS - 8 DIODES			
MCL190AB	MCL190ABP	Yellow, chrome base, 5" leads, PL-10 plug	50
MINI MARKER/CLEARANCE LIGHTS - 8 DIODES			
MCL190RB	MCL190RBP	Red, chrome base, 5" leads, PL-10 plug	50

FMVSS	P2
MATERIALS	Polycarbonate lens and housing, ABS bracket
VOLT/AMP	12.8VDC - Red .096A/Yellow .16A
DIMENSIONS	2.625" W x 1.25" H x .875" D



BULK P/N	POLYPACK P/N	DESCRIPTION	QTY
THINLINE MARKER/CLEARANCE LIGHTS - 10 DIODES			
MCL165AB	MCL165ABP	Thinline yellow	20
THINLINE MARKER/CLEARANCE LIGHTS - 10 DIODES			
MCL165RB	MCL165RBP	Thinline red	20

ACCESSORIES			
A65P	A65PP	Single wire plug, .156 male bullet	50
<i>See Optronics master catalog for mounting options</i>			

FMVSS	P2
MATERIALS	Polycarbonate lens and housing
VOLT/AMP	12.8VDC - .09A
DIMENSIONS	3.875" W x 1.25" H x .875" D



Z2015
Counter Display
9V batteries included



Z2100GLHD
Wall Mount Display
110VDC power supply included



Z2125GLLM
Wall Mount Display
110VDC power supply included



This Lamp Signals a Big Change in Vehicle Lighting.

So Unique, It Has a Patent Pending



By redefining the tail light, Optronics has changed the game. The introduction of our GloLight Series lamp represents the first truly different approach to the visual presentation of stop, tail, turn lamps in years. What makes our new lamps visually remarkable is a smoothly illuminated outer band that surrounds a central LED array that remains unlit during standard tail light operation. The dual-function outer ring brightens and the central LED array lights only during stop and turn functions. *GloLight is a signal to the industry of what's coming down the road next in commercial vehicle lighting.*



Play video 

800-364-5483
sales@optronicsinc.com
401 S 41st St E, Muskogee OK 74403

optronics®

America's Largest Offshore Vehicle Lighting Manufacturer