

TUBE JOINERS - CLAMPS - FUEL HOSE



NYLON TUBING JOINERS – Ring Barb Design, Brass.

Standard Package 2 Pieces

Part No.	Tubing Size
905-909	1/4" (6mm)
905-910	5/16" (8mm)
905-911	3/8" (10mm)



NYLON TUBING CLAMPS – Smooth inner band provides a positive 360 seal around the nylon tubing. Note – Not for use with Fuel Injection Hose.

Standard Package 10 Pieces

Part No.	Nylon Tubing Size
309-303	1/4" (6mm)
309-306	5/16" (8mm)
309-307	3/8" (10mm)



RUBBER FUEL HOSE – Meet/Exceeds SAE J30R7 and OEM specifications. Operating temperature range -29° F to 257° F. Burst pressure 50 p.s.i.

Note – Not for use with Fuel Injection Systems.

Part No.	Size
901-531	1/4" x 25'
901-532	5/16" x 25'
901-533	3/8" x 25'



FUEL INJECTION HOSE

Meets/Exceeds SAE 30R9 and OEM specifications. Operating pressure range 180 p.s.i. Burst strength exceeds 900 p.s.i.

Part No.	Size
901-514	1/4" x 25'
901-516	5/16" x 25'
901-518	3/8" x 25'



FUEL INJECTION HOSE CLAMPS

Designed specifically for high pressure fuel injection systems. Note – Not for use with nylon fuel line

Standard Package 10 Pieces

Part No.	Hose Size (I.D.)
307-570	1/4"
307-571	5/16"
307-572	3/8"



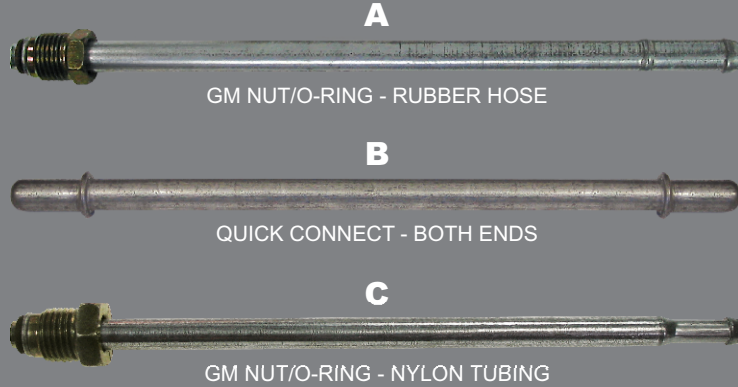


STEEL FUEL LINE/SENDING UNIT REPAIR

STEEL FUEL LINE REPAIR KITS

Individually Packaged

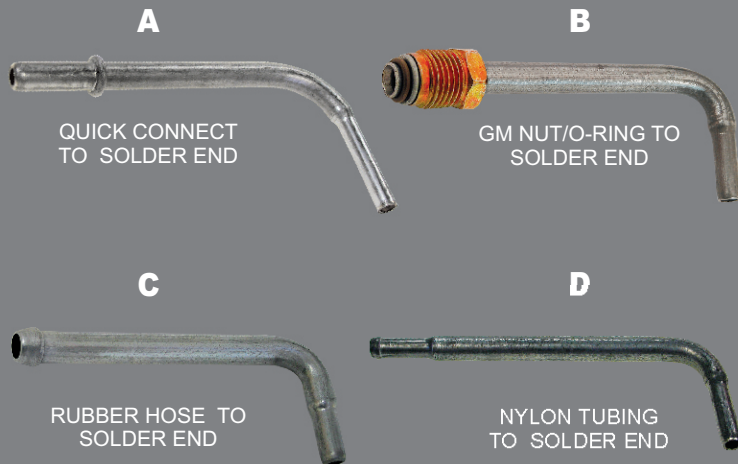
Part No.	Size	Style
905-509	5/16" x 9"	A
905-518	5/16" x 18"	
905-609	3/8" x 9"	
905-618	3/8" x 18"	
905-500	1/4" x 18"	B
905-513	5/16" x 18"	
905-613	3/8" x 18"	C
905-508	14mm. x 7.25"	
905-608	16mm. x 7.25"	



FUEL SENDING UNIT REPAIR FITTINGS

Individually Packaged

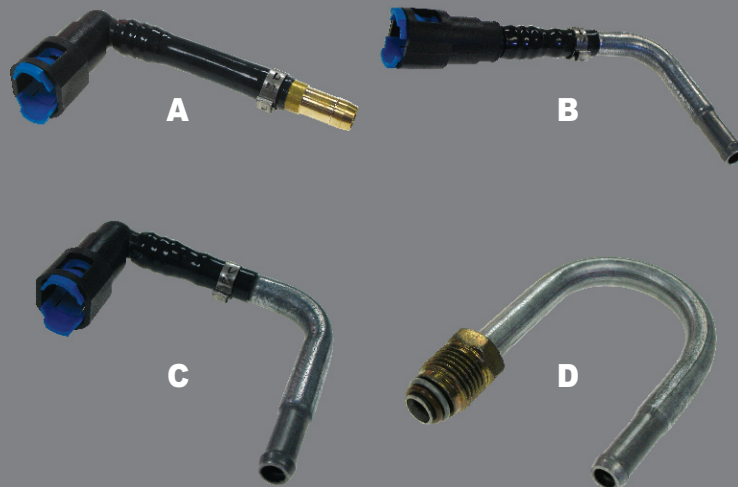
Part No.	Size	Style
905-504	1/4" x 4 3/4"	A
905-304	5/16" x 4 3/4"	
905-404	3/8" x 4 3/4"	
905-305	14mm. Nut x 4 3/4"	B
905-405	16mm. Nut x 4 3/4"	
905-313	5/16" x 12"	C
905-319	5/16" x 18"	
905-413	3/8" x 12"	
905-419	3/8" x 18"	
905-474	3/8" x 4 3/4"	D
905-374	5/16" x 4 3/4"	



FUEL SENDING UNIT TO FILTER REPAIR LINES

Individually Packaged

Part No.	Description	Style
905-806	3/8" Quick Connect to Nylon Elbow	A
905-807	3/8" Quick Connect to Steel Elbow	B
905-808	3/8" Quick Connect to Nylon Elbow	C
905-809	3/8" Quick Connect to 180 Steel Elbow	D



STEEL ADAPTOR LINES



A



GM NUT/O-RING TO NYLON TUBING

B



QUICK CONNECT - NYLON TUBING

C



RUBBER HOSE - NYLON TUBING

D



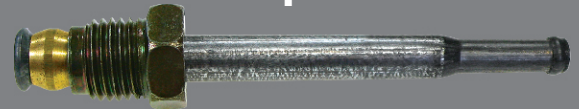
INVERTED FLARE NUT - NYLON TUBING
(COMPLETE WITH EXTRA NUT, UNION, AND CLAMP)

E



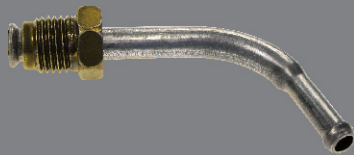
METRIC INVERTED FLARE NUT - NYLON TUBING

F

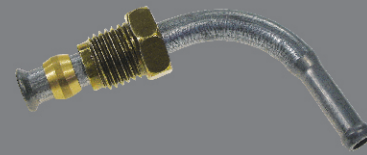


METRIC INVERTED LONG FLARE NUT - NYLON TUBING

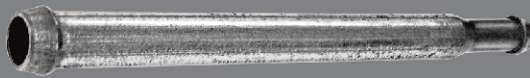
E*



F*



G



10MM TO 8MM REDUCER - NYLON TUBING

H



NYLON TUBING ELBOW

Individually Packaged

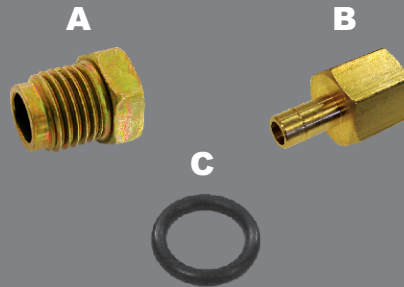
Part No.	Size	Style	Part No.	Size	Style
905-350	14mm - 8mm Nylon	A	905-370	3/8" to 10mm. Nylon	D
905-352	16mm - 10mm Nylon		905-385	14mm. To 8mm Nylon - Toyota	E
905-354	1/4" to 8mm. Nylon		905-387	14mm. To 8mm Nylon - Toyota	E*
905-356	5/16" to 8mm. Nylon	B	905-395	14mm. To 8mm Nylon - Honda	F
905-358	3/8" to 10mm. Nylon		905-397	14mm. To 8mm Nylon - Honda	F*
905-360	5/16" to 8mm. Nylon	C	905-390	Joiner / Reducer	G
905-362	3/8" to 10mm. Nylon		905-816	5/16" Nylon Elbow	H
905-368	5/16" to 8mm. Nylon		905-817	3/8" Nylon Elbow	



SENDING LINE/QUICK CONNECT FITTINGS

SENDING LINE FITTINGS - GM – Individually Packaged

Part No.	Description	Application	Style
905-101	14mm Tube Nut	GM Flare Nut/O-Ring	A
905-104	16mm Tube Nut		B
905-111	14mm Female Joiner		C
905-114	16mm Female Joiner		
304-206	14mm O-Ring		
304-207	16mm O-Ring		



QUICK CONNECT NYLON FITTINGS – ASSEMBLY TOOL REQUIRED

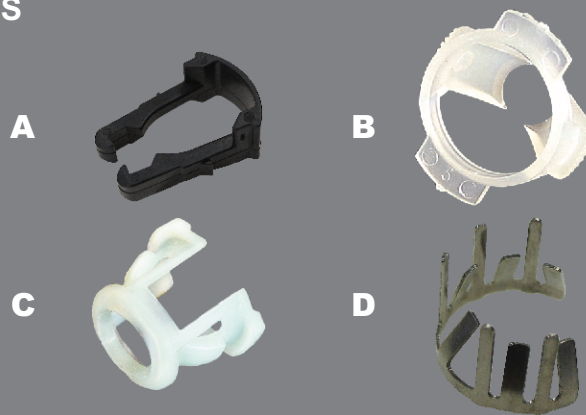
Individually Packaged

Part No.	Description	Style
905-713	5/16" To 5/16" (8mm)	A
905-714	3/8" To 10mm	
905-715	3/8" To 10mm	B
905-716	5/16" To 5/16" (8mm)	
905-725	5/16" To 10mm	C
905-717	5/16" To 5/16" (8mm)	D
905-718	5/16" To 5/16" (8mm)	E
905-719	3/8" To 10mm	
905-722	3/8" To 5/16" (8mm)	F
905-720	1/4" To 5/16" (8mm)	G
905-723	3/8" To 10mm	
905-724	3/8" To 8mm	



NYLON QUICK CONNECT RETAINER CLIPS

Part No.	Description	Style
905-170	5/16" Clip	A
905-175	3/8" Clip	
905-185	5/16" Ford Clip	B
905-190	3/8" Ford Clip	
905-180	1/4" Clip	C
905-150	5/16" Clip	D
905-155	3/8" Clip	
905-160	10.5mm Ford Clip	
905-165	13.5mm Ford Clip	



QUICK RELEASE CONNECTORS – Individually Packaged

Part No.	Size
905-124	1/4" Steel Fuel Connector
905-125	5/16" Steel Fuel Connector
905-126	3/8" Steel Fuel Connector



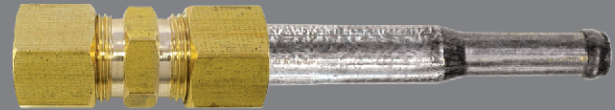
COMPRESSION FITTINGS - FUEL GAUGE REPAIR



NYLON TUBING TO STEEL LINE JOINER KITS – Conveniently connect to existing steel fuel line on vehicles changing over to nylon tubing.

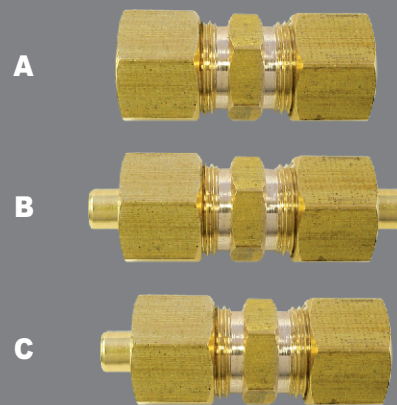
Individually Packaged

Part No.	Description
905-863	1/4" Steel - 5/16 Nylon
905-864	5/16" Steel - 5/16 Nylon
905-865	3/8" Steel - 10mm Nylon



COMPRESSION UNIONS – Individually Packaged

Part No.	Tube Size	Description	Style
D62-2	1/8	Steel / Copper – Both Ends	A
D62-3	3/16		
D62-4	1/4		
D62-5	5/16		
D62-6	3/8		
D962-4	1/4		
D962-5	5/16		
D962-6	3/8		
D963-4	1/4	Nylon – Steel / Copper	C
D963-5	5/16		
D963-6	3/8		



FUEL TANK FASTENER KIT Part No 905-383 – Contains 25 pcs of 3/8-16 x 3 Fully Threaded Hex Bolt and 25 pcs of 3/8-16 long reach 'U' Nut.



GM FUEL GAUGE READER – Efficient, cost effective solution to eliminate incorrect or erratic fuel level readings. Direct replacement for any GM vehicle equipped with this 'Sweeper Style' gauge reader.

Individually Packaged



Part No. 905-700



FUEL LINE REPAIR ASSORTMENTS/MERCHANDISERS



FUEL INJECTION CLAMPS ASSORTMENT NO. 020-400

36 pieces, 12 of each:
307-570 – 1/4"
307-571 – 5/16"
307-572 – 3/8"



NYLON FUEL LINE RETAINER CLIPS ASSORTMENT NO. 020-401

30 pieces:
905-170 - 10 905-175 - 5 905-180 - 5
905-150 - 5 905-155 - 5



ADAPTOR LINES ASSORTMENT NO. 020-403

One of each adaptor lines,
6 of each pinch clamps

905-350 905-352
905-356 905-358
905-354 905-360
905-362 905-364
905-366 905-368
905-370 309-306
309-307



SENDING UNIT REPAIR PARTS ASSORTMENT NO. 022-229

Contains 1 of each:

905-312 905-412 905-418
905-304 905-405 905-305
905-314 905-406 905-414
905-420 905-313 905-413
905-319 905-419 905-404
905-352 905-356 905-350
905-360 905-362 905-364
905-366 905-368 905-370

FILTER LINE REPAIR PARTS ASSORTMENT NO. 022-228

Contains 1 of each:

905-509 905-518 905-530
905-548 905-609 905-618
905-630 905-648 905-513
905-549 905-613 905-649
905-500 905-400 905-404
905-408 905-410 905-995
905-325 304-207 304-206
905-104 905-105 905-106

TRANSMISSION - OIL COOLER FITTINGS



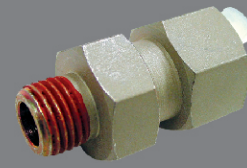
TRANSMISSION AND OIL COOLER LINE QUICK CONNECTORS

Individually Packaged

Part No.	Application
905-200	1996 up Ford, Lincoln, and Mercury
905-201	1993 up Ford with 3/8" Tube
905-202	1996 up GM CK Trucks
905-203	1996 up GM Cars & Trucks S/T and C/K
905-204	1996 up GM & Trucks S/T and C/K - 1998 up W-Body
905-205	1996 up GM Trucks
905-206	1996 up GM C/K Series Trucks Rear Wheel Drive - Engine Oil Cooler
905-207	1982-94 Ford various models with 5/16" Tube
905-208	All GM/Chrysler with 5/16" Tube
905-209	3/8" Quick Disconnect Tool
905-210	1/2" Quick Disconnect Tool
905-211	1982 up Ford with 5/16" Tube
905-212	1994 up GM Oil Cooler Connector w/ external O-Ring
905-213	1998 up GM Oil Cooler Connector
905-214	1994 up GM Oil Cooler Connector w/ external O-Ring



905-200



905-201



905-202



905-203



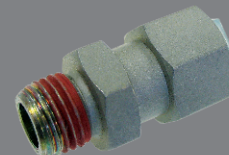
905-204



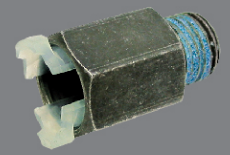
905-205



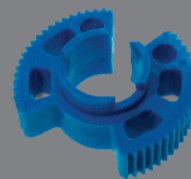
905-206



905-207



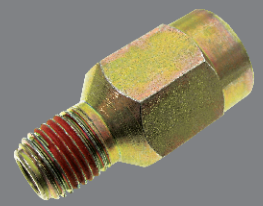
905-208



905-209



905-210



905-211



905-212



905-213



905-214



TRANSMISSION REPAIR LINES - ASSORTMENTS

SPECIAL FLARE TRANSMISSION REPAIR LINES – Fits most GM, Ford, and Chrysler vehicles.

Individually Packaged

Part No.	Description	Style
905-553	3/8" x 4"	A
905-555	5/16" x 4"	
905-554	3/8" x 4"	B
905-556	5/16" x 4"	

A



B



TRANSMISSION COOLER LINES

Individually Packaged

Part No.	Thread (Both Ends)	Inverted Tube Size x Length	Inverted Flare Nut Opposite End
DS512-GM	1/2-20	5/16" x 12" - Male	5/16" - Male
DS512-CHRY	1/2-20	5/16" x 12" - Female	5/16" - Female
DS530-GM	1/2-20	5/16" x 30" - Male	5/16" - Male
DS530-FORD	1/2-20	5/16" x 30" - Male	5/16" - Female
DS560-GM	1/2-20	5/16" x 60" - Male	5/16" - Male
DS560-CHRY	1/2-20	5/16" x 60" - Female	5/16" - Female
DS560-FORD	1/2-20	5/16" x 60" - Male	5/16" - Female
DS572-GM	1/2-20	5/16" x 72" - Male	5/16" - Male
DS572-CHRY	1/2-20	5/16" x 72" - Female	5/16" - Female



ASSORTMENTS



TRANSMISSION FITTINGS
ASSORTMENT NO. 020-414

15 piece assortment
One of each fitting

905-200	905-205	905-210
905-201	905-206	905-211
905-202	905-207	905-212
905-203	905-208	905-213
905-204	905-209	905-214



TRANSMISSION REPAIR LINES
ASSORTMENT NO. 020-412

38 piece assortment

4pc - 905-553	10pc - 307-571
4pc - 905-554	10pc - 307-572
4pc - 905-555	1pc - 905-209
4pc - 905-556	1pc - 905-210

COOLANT SYSTEM FITTINGS - ASSORTMENTS



QUICK CONNECT COOLANT SYSTEM CONNECTORS

Individually Packaged

Part No.	Application
905-001	1990 up GM Cars & Trucks with 5/8" Hose
905-002	1989 up GM Cars & Trucks with 3/4" Hose
905-003	1986 up Ford Cars & Trucks with 5/8" Hose/Tube
905-004	1986 up Ford Cars & Trucks with 3/4" Hose/Tube
905-006	1990 up Ford/Mazda Trucks with 3/4" Hose/Tube - 90 deg elbow
905-007	GM 3.1 Replacement for O.E. Plastic Fitting



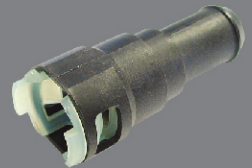
905-001



905-002



905-003



905-004



905-006



905-007

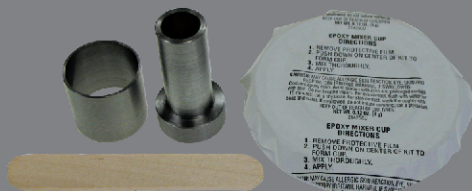
HEATER HOSE CONNECTORS

Individually Packaged

Part No.	Hose Size (I.D.)
905-014	3/4" to 5/8"
905-019	1/2"
905-020	5/8"
905-021	3/4"



GM 3800 INTAKE/PLENUM REPAIR KIT PART NO. 905-010



Efficient, cost effective solution for GM 3800 engines exhibiting sign/symptoms of excessive coolant consumption and/or coolant leaks. Kit includes; 1 Plenum Repair Tube, 1 Intake Port Repair Tube, 1 Application Fast Cure Epoxy, and detailed instructions.

COOLANT SYSTEM FITTINGS ASSORTMENT NO. 020-415



10 piece assortment

- 1pc - 905-001 1pc - 905-007
- 1pc - 905-002 1pc - 905-014
- 1pc - 905-003 1pc - 905-019
- 1pc - 905-004 1pc - 905-020
- 1pc - 905-006 1pc - 905-021



TOOL BOX



RATCHETING TUBE CUTTER

Part No.	Capacity
905-090	1/8" to 1/2" O.D.
905-091	1/4" to 7/8" O.D.



MINI TUBE CUTTER

Part No.	Capacity	Turning Radius
DTC-3	1/8" to 5/8" O.D.	1-5/8" Max.



MULTI-PURPOSE CUTTER

PART NO. DMPC-1

Ideal for cutting synthetic and rubber hose, nylon tubing, PVC pipe, and copper wire. Maximum capacity is 1-1/8" O.D.

BLADE ONLY

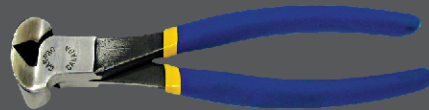
PART NO. DMPC-BLADE



3D HACKSAW

PART NO. 905-110

Restricted access settings goes over pipes, under pipes and around pipes. Uses standard 12" blades.



UNIVERSAL PINCH CLAMP

PART NO. 905-995

For installing pinch clamps on nylon tubing



MICRO-TORCH

PART NO. 905-832

Professional grade 1300c, adjustable flame, self igniting, refillable, hands free operation uses butane fuel hot enough to heat treat parts.



LEVER TYPE TUBE BENDER

PART NO. D406

Produce smooth accurate bends up to 180° in soft copper, steel, and stainless steel tube up to 3/8" O.D. Ergonomic 90° start angle maximizes leverage and minimizes bending effort. Features include cushion gripped handles and a built in vise mount. Unique oil absorbing, bending shoe helps to further minimize bending effort.



H. Paulin & Co. Limited Toronto, Canada M1L 4N3

VANCOUVER • EDMONTON • WINNIPEG • MONTREAL • MONCTON