

# MATERIAL HANDLING



VANGUARD STEEL LTD.



This is

# VANGUARD STEEL LTD.

at your service

Since 1960, Vanguard Steel Ltd., a sister Company of Ringball Corporation, has been supplying specialty steels and steel products to North American Industries.

By representing some of the most reputable manufacturers around the Globe, Vanguard's various Product Divisions offer a wide range of North American, European and Asian products, many of which are being manufactured to Vanguard's own specifications and often exceed Industry Standards.

Besides office and warehousing facilities throughout Canada, Vanguard Steel relies on a vast network of Canadian and U.S. Distributors to assure local product availability and best possible service.



## VANGUARD'S PRODUCT DIVISIONS:

- **SPECIALTY STEELS**
- **WIRE ROPES, CABLES AND RELATED HARDWARE**
- **CHAINS AND ACCESSORIES**
- **BUILDER'S HARDWARE**
- **INDUSTRIAL KNIVES**
- **ABRASIVES**
- **WELDING CONSUMABLES**

## WAREHOUSE LOCATIONS

### VANGUARD'S OFFICE & WAREHOUSE LOCATIONS:



**TORONTO (Head Office):**  
2160 Meadowpine Blvd.  
Mississauga, ON L5N 6H6  
(905) 821-1100  
Fax. (905) 821-2024  
toronto@vanguardsteel.com



**TORONTO (Specialty Steel Div.):**  
2210 Meadowpine Blvd.  
Mississauga, ON L5N 6H6  
(905) 821-1100  
Fax. (905) 821-1102  
steelsales@vanguardsteel.com



**MONTREAL:**  
2205 de l'Aviation  
Dorval, QC H9P 2X6  
(514) 685-1515  
Fax. (514) 685-1516  
montreal@vanguardsteel.com



**EDMONTON:**  
7606 McIntyre Rd. NW  
Edmonton, AB T6E 6Z1  
(780) 466-1115  
Fax. (780) 469-4545  
edmonton@vanguardsteel.com



**WINNIPEG:**  
190 Omands Creek Blvd.  
Winnipeg, MB R2R 1V7  
(204) 694-2259  
Fax. (204) 633-7230  
winnipeg@vanguardsteel.com



**VANCOUVER:**  
7880 Fraser Park Dr.  
Burnaby, BC V5J 5L8  
(604) 294-3191  
Fax. (604) 294-8845  
vancouver@vanguardsteel.com



## MATERIAL HANDLING

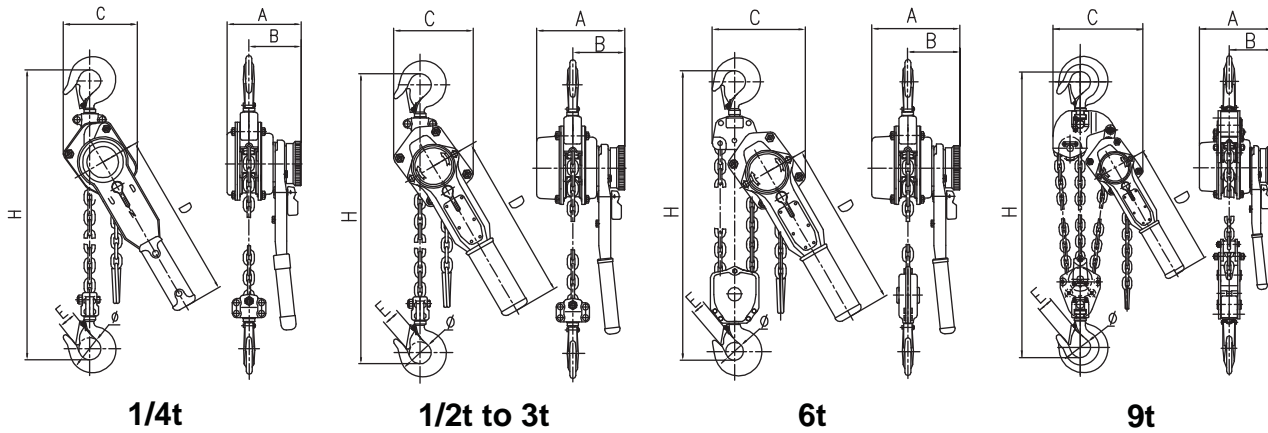
- Gold Series Manual Lever Hoists ...6
- Parts for Gold Series Lever Hoists ...7
- Type-1 Heavy Duty Manual Lever Hoists ...8
- Parts for Type-1 Lever Hoists ...9
- Gold Series Chain Hoists ...10
- Parts for Gold Series Chain Hoists ...11
- Type-1 Heavy Duty Manual Chain Hoists ...12
- Parts for Type-1 Chain Hoists ...13
- Push Trolleys ...14
- Beam Clamps ...15
- VH Cable Pullers ...16
- Cable Assembly ...16
- VCT-B Swivel Style Cargo Trolley ...17
- Handles for VCT-B Swivel Style Cargo Trolley ...17
- Polyurethane Wheels ...17
- Drum Lifters ...18

## CONVERSION CHART

SUPER DUTY MANUAL LEVER HOISTS



- Compact design
- Light weight robust construction
- Fully machined lifting wheels
- Optimal gear ratio
- Closed sealed bearings
- Extra heavy double pawl braking mechanism
- Extra thick friction discs (asbestos free)
- Grade 80 alloy load chain
- Steel handles with rubber hand grip providing greater operator comfort and control
- Self-articulating top hooks
- Extra large forged alloy top and bottom hooks (with cast latches) rotate 360°
- Top and bottom hooks are designed to stretch when overloaded before chain failure
- Each hoist is proof tested at 1.5 times the rated capacity, certificate provided with each hoist
- All units except 1/4t come with overload protection installed
- Durable baked enamel paint protection
- Meet ASME B30.21 safety standards
- ISO 9001 – 2001 certified factory
- Custom length units available upon request



Capacity Metric Tons (t)	1/4*	1/2	3/4	1-1/2	3	6	9
Proof Load (kN)	3.70	7.50	11.25	22.00	45.00	90.00	135.00
Effort (maximum lift) (N)	282	248	265	295	335	370	420
No. of falls, load chain	1	1	1	1	1	2	3
Load Chain (mm)	4 x 12	5 x 15	6 x 18	7 x 21	10 x 30	10 x 30	10 x 30
Dimensions (mm)	A	92	143	148	173	200	200
	B	71	86	87	99	112	112
	C	70	118	132	145	199	230
	D	168	253	278	378	418	418
	E	19	23.5	25.5	31	36	37
	H	245	300	330	400	520	640
	Ø	31	31.5	35.5	42.5	50	53

\* 1/4T unit does not have overload protection

\*\* 9T unit is not a standard stock item

# MATERIAL HANDLING

## SUPER DUTY LEVER HOISTS

Hoist No.	Tonnage Rating	Lift	Capacity (lbs)	Load Chain	Weight (lbs)	Vanguard Code
VLHP 14x5	1/4	5	500	4x12	4.4	3855 0502E
VLHP 14x10	1/4	10	500	4x12	7.7	3855 1002E
VLHP 12	1/2	w/o	1,000	5x12	9.9	3855 0005E
VLHP 12x5	1/2	5	1,000	5x15	11.0	3855 0505E
VLHP 12x10	1/2	10	1,000	5x15	13.2	3855 1005E
VLHP 34	3/4	w/o	1,500	6x18	11.0	3855 0007E
VLHP 34x5	3/4	5	1,500	6x18	14.3	3855 0507E
VLHP 34x10	3/4	10	1,500	6x18	17.6	3855 1007E
VLHP 112	1-1/2	w/o	3,000	7x21	18.7	3855 0015E
VLHP 112x5	1-1/2	5	3,000	7x21	23.1	3855 0515E
VLHP 112x10	1-1/2	10	3,000	7x21	26.4	3855 1015E
VLHP 3	3	w/o	6,000	10x30	34.1	3855 0030E
VLHP 3x5	3	5	6,000	10x30	44.0	3855 0530E
VLHP 3x10	3	10	6,000	10x30	55.0	3855 1030E
VLHP 6	6	w/o	12,000	10x30	46.2	3855 0060E
VLHP 6x5	6	5	12,000	10x30	66.0	3855 0560E
VLHP 6x10	6	10	12,000	10x30	85.8	3855 1060E



Custom lengths available upon request

## PARTS FOR SUPER DUTY LEVER HOISTS

Capacity Metric Tons (t)		1/4	1/2	3/4	1-1/2	3	6
Load Chain	Dimensions (mm)	4 x 12	5 x 15	6 x 18	7 x 21	10 x 30	10 x 30
	Part Number	3858 0412	3858 0515	3858 0618	3858 0824	3858 1030	3858 1030
	Weight (lbs/ft)	0.24	0.37	0.52	0.71	1.46	1.46
Bottom Hook Assembly*		3855 6002E	3855 6005E	3855 6007E	3855 6015E	3855 6030E	3855 6060E
Top Hook Assembly*		3855 5002E	3855 5005E	3855 5007E	3855 5015E	3855 5030E	3855 5060E
Cast Latch Kits		3855 98002E	3855 98005E	3855 98007E	3855 98015E	3855 98030E	3855 98060E
Friction Discs (asbestos free)			3855 7005E	3855 7007E	3855 7015E	3855 7030E	3855 7060E
Handle			3855 8005E	3855 8007E	3855 8015E	3855 8030E	3855 8060E
Square Cast Ring		3855 93002E	3855 93002E	3855 93002E	3855 93015E	3855 93030E	3855 93030E
Guide Plate				3855 90807E	3855 90815E	3855 90830E	3855 90830E
Name Plate				3855 92707E	3855 92715E	3855 92730E	3855 92760E

\* Bottom and Top Hook Assemblies come complete with Cast Latches

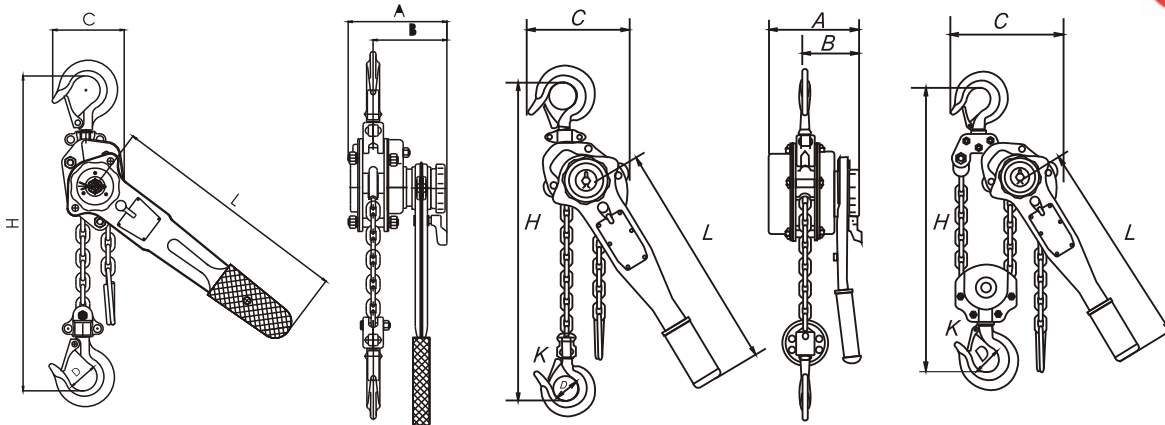
**Warning:**

**NEVER EXCEED WORKING LOAD LIMITS!**  
**FAILURE TO OBSERVE these warnings may result in serious injury or death!**

- **ALWAYS** inspect all components frequently for signs of wear or damage
- **ALWAYS** keep load chains lubricated

## TYPE-1 HEAVY DUTY MANUAL LEVER HOISTS

- Compact design
- Light weight robust construction
- Fully machined lifting wheels
- Grade 80 alloy load chain
- Sealed bearings
- Triple spur geared, guarantees efficient/reliable operation
- Automatic brake engagement holds load at any desired height
- Double pawl braking mechanism
- Friction discs (asbestos free)
- Steel handles with rubber hand grip providing greater operator comfort and control
- Self-articulating top hooks
- Forged alloy top and bottom hooks (with latches) rotate 360°
- Top and bottom hooks are designed to stretch when overloaded before chain failure
- Each hoist is proof tested at 1.5 times the rated capacity, certificate is provided with each hoist
- Meet ASME B30.21 safety standards
- ISO 9001 – 2001 certified factory
- Custom length units available upon request



1/2t

3/4t to 3t

6t to 9t

Capacity Metric Tons (t)	1/2	3/4	1-1/2	3	6	9*
Proof Load (kN)	6.30	11.00	22.10	44.10	88.20	132.30
Effort (maximum lift) (N)	340	140	220	320	340	360
No. of falls, load chain	1	1	1	1	2	3
Load Chain (mm)	5 x 15	6 x 18	8 x 24	10 x 30	10 x 30	10 x 30
Dimensions (mm)	A	105	145	175	203	203
	B	75	86	100	118	118
	C	80	122	130	150	205
	D	35	40	45	55	65
	H	260	320	380	480	620
	L	300	280	410	410	410
	K	30	26	30	38	44

\* 9T unit is not a standard stock item

# MATERIAL HANDLING

## TYPE-1 LEVER HOISTS

Hoist No.	Tonnage Rating	Lift	Capacity (lbs)	Load Chain	Weight (lbs)	Vanguard Code
VLH 12	1/2	w/o	1,000	5x15	7.00	3855 0005
VLH 12x5	1/2	5	1,000	5x15	8.80	3855 0505
VLH 12x10	1/2	10	1,000	5x15	10.60	3855 1005
VLH 34	3/4	w/o	1,500	6x18	13.20	3855 0007
VLH 34x5	3/4	5	1,500	6x18	15.90	3855 0507
VLH 34x10	3/4	10	1,500	6x18	18.50	3855 1007
VLH 34x15	3/4	15	1,500	6x18	21.20	3855 1507
VLH 34x20	3/4	20	1,500	6x18	23.80	3855 2007
VLH 112	1-1/2	w/o	3,000	8x24	19.20	3855 0015
VLH 112x5	1-1/2	5	3,000	8x24	24.70	3855 0515
VLH 112x10	1-1/2	10	3,000	8x24	29.50	3855 1015
VLH 112x15	1-1/2	15	3,000	8x24	34.20	3855 1515
VLH 112x20	1-1/2	20	3,000	8x24	39.00	3855 2015
VLH 3	3	w/o	6,000	10x30	37.50	3855 0030
VLH 3x5	3	5	6,000	10x30	46.30	3855 0530
VLH 3x10	3	10	6,000	10x30	53.60	3855 1030
VLH 3x15	3	15	6,000	10x30	60.90	3855 1530
VLH 3x20	3	20	6,000	10x30	68.40	3855 2030
VLH 6	6	w/o	12,000	10x30	50.70	3855 0060
VLH 6x5	6	5	12,000	10x30	68.40	3855 0560
VLH 6x10	6	10	12,000	10x30	82.90	3855 1060
VLH 6x15	6	15	12,000	10x30	97.50	3855 1560
VLH 6x20	6	20	12,000	10x30	111.80	3855 2060



Custom lengths available upon request

## PARTS FOR TYPE-1 LEVER HOISTS

Capacity Metric Tons (t)		1/2	3/4	1-1/2	3	6
Load Chain	Dimensions (mm)	5 x 15	6 x 18	8 x 24	10 x 30	10 x 30
	Part Number	3858 0515	3858 0618	3858 0824	3858 1030	3858 1030
	Weight (lbs/ft)	0.37	0.52	0.94	1.46	1.46
Bottom Hook Assembly*		3855 6005	3855 6007	3855 6015	3855 6030	3855 6060
Top Hook Assembly*			3855 5007	3855 5015	3855 5030	3855 5060
Latch Kits		3859 8005	3859 8007	3859 8015	3859 8030	3859 8060
Friction Discs (asbestos free)		3859 7005	3859 7007	3859 7015	3859 7030	3859 7030
Handle		3855 8005	3855 8007	3855 8015	3855 8030	3855 8060
Square Cast Ring			3855 93007	3855 93015	3855 93030	3855 93030
Guide Plate			3855 907007	3855 907015	3855 90730	
Name Plate		3855 9105	3855 9107	3855 9115	3855 9130	
Rubber Grip			3855 961007		3855 961015	

\* Bottom and Top Hook Assemblies come complete with latches

Warning:

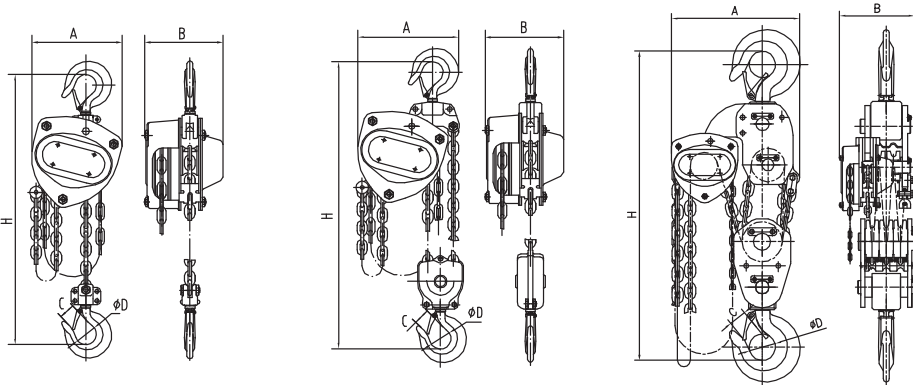
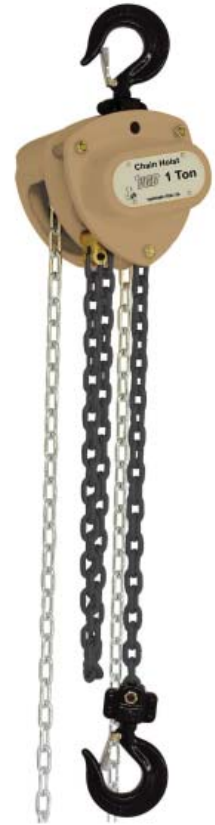
**NEVER EXCEED WORKING LOAD LIMITS!**  
**FAILURE TO OBSERVE these warnings may result in serious injury or death!**

- **ALWAYS** inspect all components frequently for signs of wear or damage
- **ALWAYS** keep load chains lubricated



## SUPER DUTY CHAIN HOISTS

- Compact design
- Light weight robust construction
- Overload protection
- Fully machined lifting wheels
- Optimal gear ratio
- Closed sealed bearings
- Triple spur geared guarantee efficient/reliable operation
- Automatic brake engagement holds load at any desired height
- Extra heavy double pawl braking mechanism
- Extra thick friction discs (asbestos free)
- Grade 80 alloy load chain
- Self-articulating top hooks
- Extra large forged alloy top and bottom hooks (with cast latches) rotate 360°
- Top and bottom hooks are designed to stretch when overloaded before chain failure
- Each hoist is proof tested at 1.5 times the rated capacity, certificate provided with each hoist
- Durable baked enamel paint protection
- Meet ASME B30.16 safety standards
- ISO 9001 – 2001 certified factory
- Custom length units available upon request



1/2t to 3t

5t

10t

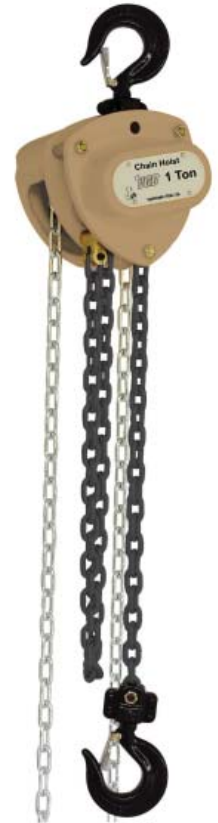
Capacity Metric Tons (t)	1/2	1	1-1/2	2	3	5	10	
Proof Load (kN)	7.35	14.70	22.05	29.40	44.10	73.50	122.50	
Effort (maximum lift) (N)	240	250	265	335	372	360	380	
No. of falls, load chain	1	1	1	1	1	2	4	
Load Chain (mm)	5 x 15	6 x 18	7 x 21	8 x 24	10 x 30	10 x 30	10 x 30	
Dimensions (mm)	A	148	172	196	210	255	463	
	B	132	151	173	175	205	183	
	C	23	26	29.5	34	37.5	41	50
	D	35	40	45	50	55	65	85
	H	345	376	442	470	580	690	830

\*7-1/2T, 10T, 15T, 20T, and 25T are also available as a special order

# MATERIAL HANDLING

## SUPER DUTY CHAIN HOISTS

Hoist No.	Tonnage Rating	Lift	Capacity (lbs)	Load Chain	Weight (lbs)	Vanguard Code
VCHP 12	1/2	W/0	1,000	5x15	11.0	3850 0005E
VCHP 12x10	1/2	10	1,000	5x15	19.8	3850 1005E
VCHP 12x20	1/2	20	1,000	5x15	29.7	3850 2005E
VCHP 1	1	W/0	2,000	6x18	15.4	3850 0010E
VCHP 1x10	1	10	2,000	6x18	26.4	3850 1010E
VCHP 1x20	1	20	2,000	6x18	36.3	3850 2010E
VCHP 112	1-1/2	W/0	3,000	7x21	24.2	3850 0015E
VCHP 112x10	1-1/2	10	3,000	7x21	36.3	3850 1015E
VCHP 112x20	1-1/2	20	3,000	7x21	48.4	3850 2015E
VCHP 2	2	W/0	4,000	8x24	28.6	3850 0020E
VCHP 2x10	2	10	4,000	8x24	41.8	3850 1020E
VCHP 2x20	2	20	4,000	8x24	58.3	3850 2020E
VCHP 3	3	W/0	6,000	10x30	47.3	3850 0030E
VCHP 3x10	3	10	6,000	10x30	70.4	3850 1030E
VCHP 3x20	3	20	6,000	10x30	83.6	3850 2030E
VCHP 5	5	W/0	10,000	10x30	57.2	3850 0050E
VCHP 5x10	5	10	10,000	10x30	86.9	3850 1050E
VCHP 5x20	5	20	10,000	10x30	113.3	3850 2050E



... Custom length Chain Hoists available upon request  
 ... 7 1/2T, 10T, 15T, 20T, and 25T chain hoists are also available as a special order from our factory

## PARTS FOR SUPER DUTY CHAIN HOISTS

Capacity Metric Tons (t)		1/2	1	1-1/2	2	3	5
Load Chain	Dimensions (mm)	5 x 15	6 x 18	7 x 21	8 x 24	10 x 30	10 x 30
	Part Number	3858 0515	3858 0618	3858 0721	3858 0824	3858 1030	3858 1030
Bottom Hook Assembly*		3850 6005E	3850 6010E	3850 6015E	3850 6020E	3850 6030E	3850 6050E
Top Hook Assembly*			3850 93010E	3850 93015E	3850 93020E	3850 93030E	3850 93050E
Cast Latch Kits		3850 8005E	3850 8010E	3850 8015E	3850 8020E	3850 8030E	3850 8050E
Friction Discs (asbestos free)		3850 7005E	3850 7010E	3850 7015E	3850 7020E	3850 7030E	3850 7050E
Name Tag			3850 91610E	3850 91615E	3850 91620E	3850 91630E	3850 91650E
Chain Guide Roller			3850 93010E	3850 93015E	3850 93020E	3850 92030E	3850 93050E

\* Bottom and Top Hook Assemblies come complete with cast latches

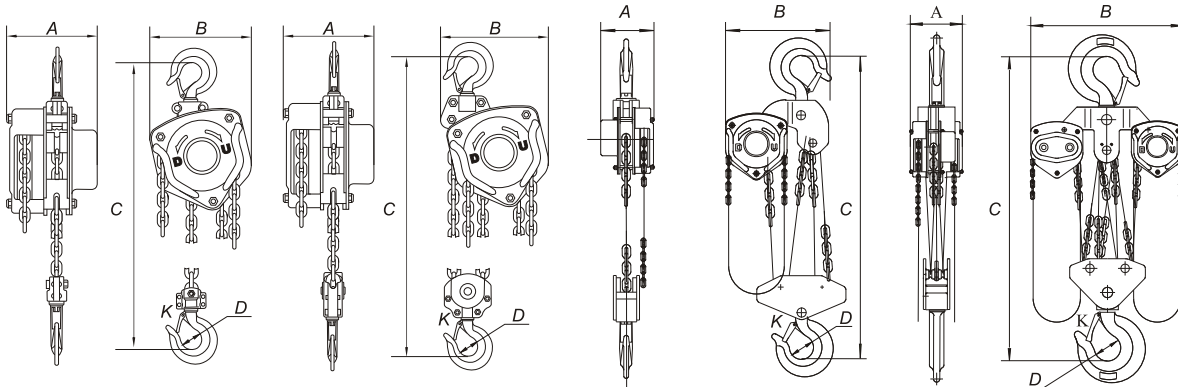
**Warning:**

**NEVER EXCEED WORKING LOAD LIMITS!**  
**FAILURE TO OBSERVE these warnings may result in serious injury or death!**

- **ALWAYS** inspect all components frequently for signs of wear or damage
- **ALWAYS** keep load chains lubricated

### TYPE-1 HEAVY DUTY MANUAL CHAIN HOISTS

- Compact design
- Light weight robust construction
- Fully machined lifting wheels
- Grade 80 alloy load chain
- Sealed bearings
- Triple spur geared guarantee efficient/reliable operation
- Automatic brake engagement holds load at any desired height
- Double pawl braking mechanism
- Asbestos free friction discs
- Self-articulating top hooks
- Forged alloy top and bottom hooks (with latches) rotate 360°
- Top and bottom hooks are designed to stretch when overloaded before chain failure
- Each hoist is proof tested at 1.5 times the rated capacity, certificate provided with each hoist
- Meet ASME B30.16 safety standards
- ISO 9001 – 2001 certified factory
- Custom length units available upon request



0.5t, 1t, 1.5t, 2t

3t, 5t

10t

20t

Capacity Metric Tons (t)	1/2	1	1-1/2	2	3	5	10	20
Proof Load (kN)	7.5	15	22.5	30	45	75	150	250
Effort (maximum lift) (N)	200	320	360	365	385	435	435	435 x 2
No. of falls, load chain	1	1	1	1	2	2	4	8
Load Chain (mm)	6 x 18	6 x 18	8 x 24	8 x 24	8 x 24	10 x 30	10 x 30	10 x 30
Dimensions (mm)	A	137.5	146.5	170	170	170	190	209
	B	137	162	183	194	220	288	384
	C	270	317	399	414	465	618	798
	D	35	35.5	45	42.5	50	64	85
	K	28	26	32.5	32	37	46	50
Net Weight (Kgs) based upon a 10Ft lift	9.3	11.4	16.7	18.5	21.2	41.8	81.7	173
Extra weight per Foot of extra lift (approx.) Kgs	0.52	0.52	0.70	0.70	1.13	1.71	2.96	5.91

Note: Units up to 50t available from our factory as a special order

# MATERIAL HANDLING

## TYPE 1 CHAIN HOISTS

Hoist No.	Tonnage Rating	Lift	Capacity (lbs)	Load Chain	Weight (kgs)	Vanguard Code
VCH 12	1/2	W/0	1,000	6 x 18	4.2	3850 0005
VCH 12x10	1/2	10	1,000	6 x 18	9.3	3850 1005
VCH 12x20	1/2	20	1,000	6 x 18	14.4	3850 2005
VCH 1	1	W/0	2,000	6 x 18	6.3	3850 0010
VCH 1x10	1	10	2,000	6 x 18	11.4	3850 1010
VCH 1x20	1	20	2,000	6 x 18	16.5	3850 2010
VCH 112	1-1/2	W/0	3,000	8 x 24	9.8	3850 0015
VCH 112x10	1-1/2	10	3,000	8 x 24	16.7	3850 1015
VCH 112x20	1-1/2	20	3,000	8 x 24	23.6	3850 2015
VCH 2	2	W/0	4,000	8 x 24	11.6	3850 0020
VCH 2x10	2	10	4,000	8 x 24	18.5	3850 1020
VCH 2x20	2	20	4,000	8 x 24	25.4	3850 2020
VCH 3	3	W/0	6,000	8 x 24	10.1	3850 0030
VCH 3x10	3	10	6,000	8 x 24	21.2	3850 1030
VCH 3x20	3	20	6,000	8 x 24	32.3	3850 2030
VCH 5	5	W/0	10,000	10 x 30	25.0	3850 0050
VCH 5x10	5	10	10,000	10 x 30	41.8	3850 1050
VCH 5x20	5	20	10,000	10 x 30	58.6	3850 2050
VCH 10	10	W/0	20,000	10 x 30	52.6	3850 00100
VCH 10x10	10	10	20,000	10 x 30	81.7	3850 10100
VCH 10x20	10	20	20,000	10 x 30	110.8	3850 20100
VCH 20	20	W/0	40,000	10 x 30	115.0	3850 00200
VCH 20x10	20	10	40,000	10 x 30	173.0	3850 10200
VCH 20x20	20	20	40,000	10 x 30	231.0	3850 20200



... Chain hoists with overload protection and/or custom lengths available upon request

## PARTS FOR TYPE 1 CHAIN HOISTS

Capacity Metric Tons (t)		1/2	1	1 -1/2	2	3	5
Load Chain	Dimensions (mm)	6 x 18	6 x 18	8 x 24	8 x 24	8 x 24	8 x 24
	Part Number	3858 0618	3858 0618	3858 0824	3858 0824	3858 0824	3858 1030
Bottom Hook Assembly*		3850 6005	3850 6010	3850 6015	3850 6020	3850 6030	3850 6060
Top Hook Assembly*			3850 5910	3850 5915	3850 5920	3850 5930	3850 5950
Latch Kits		3859 8005	3859 8007	3859 8015	3859 8020	3859 8030	3859 8060
Friction Discs (asbestos free)		3859 7005	3859 7007	3859 7015	3859 7015	3859 7015	3859 7030
Overload Device		3859 9005	3859 9007	3859 9015	3859 8020	3859 9030	3859 9060
Name Tag		3850 9105	3850 9110	3850 9115	3850 9120	3850 9130	3850 9150
Chain Guide		3850 92005	3850 92010	3850 92015	3850 92020	3850 92030	3850 92050

\* Latch kits fit both the Top and Bottom Hooks

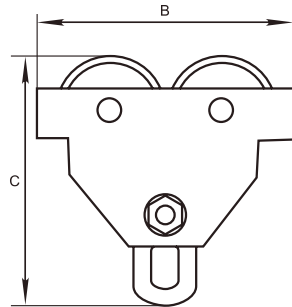
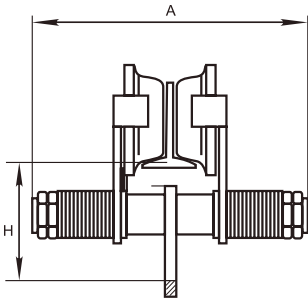
Warning:

**NEVER EXCEED WORKING LOAD LIMITS!**  
**FAILURE TO OBSERVE these warnings may result in serious injury or death!**

- **ALWAYS** inspect all components frequently for signs of wear or damage
- **ALWAYS** keep load chains lubricated

## PUSH TROLLEYS

- Meet ANSI B30.16 standards
- ISO 9001 – 2001 certified factory



Model No.	Capacity Metric Tons	Weight (lbs)	I-Beam Width		Dimensions (inches)				Vanguard Code
			mm	inches	A	B	C	H	
VPT-C 12	1/2	18.92	64 - 152	2.52 - 5.98	10.39	8.50	7.68	4.33	3857 2005
VPT-C 1	1	33.88	64 - 203	2.52 - 7.99	13.19	10.24	9.41	5.35	3857 2010
VPT-C 2	2	50.60	88 - 203	3.46 - 7.99	13.90	11.81	11.26	6.34	3857 2020
VPT-C 3	3	96.36	102 - 305	4.02 - 12.00	14.61	13.58	13.23	7.28	3857 2030
VPT-C 5	5	110.00	114 - 305	4.49 - 12.00	15.47	15.35	15.47	8.66	3857 2050
VPT-C 10	10	225.50	117 - 305	4.61 - 12.00	20.94	18.50	19.68	11.02	3857 2100

**Installation:**

**THE INSTALLATION of push trolleys must be performed by qualified riggers**

Ensure that all safety regulations are complied with during installation (use of safety harnesses, evacuation of the areas, warning signs...etc).

Measure the actual width of the beam.

When required, assemble the correct number of spacer washers equally on both sides, to the inside of the trolley side plates. Make sure that the swivel hanger pin trolley wheel flanges are 6 mm greater than the runway beam width.

**SLOWLY** run the unit along the full length of the structure/runway beam to ensure safe factory operations, make all necessary adjustments **BEFORE** applying any load.

**Warning:**

**FAILURE TO OBSERVE these warnings may result in serious injury or death!**

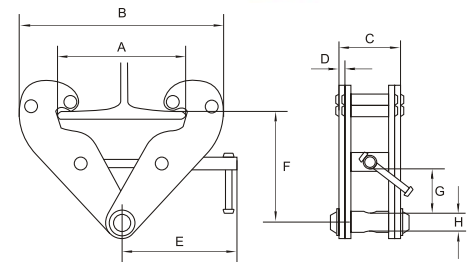
- **NEVER EXCEED WORKING LOAD LIMITS**
- **During use, the accidental impacts or snagging of the loads being handled with surrounding objects may overload the units. Always remain aware of your surroundings.**
- **NEVER modify the equipment**
- **NEVER side pull the loads, and always ensure to centre the equipment above the load before lifting it**
- **DO NOT constantly use the end plates as a means of stopping**
- **DO NOT USE these push trolleys:**
  - unless the beam has been tested and approved for attaching lifting devices
  - unless the size range of the push trolley corresponds with the size of the beam
  - without making sure that the beam capacity exceeds the load rating of the push trolley
  - without making sure that the push trolley is fully tightened and properly engaged to the beam
  - without closely inspecting the push trolley for signs of wear or damage prior to use

# MATERIAL HANDLING

## BEAM CLAMPS

- Meet ANSI B30.16 standards
- ISO 9001 – 2001 certified factory

Model No.	Capacity Metric Tons	Test Load (kN)	Weight (lbs)	Vanguard Code
VBC1	1	14.71	9.9	3856 0001
VBC2	2	29.42	11.0	3856 0002
VBC3	3	44.13	23.0	3856 0003
VBC5	5	61.92	24.0	3856 0005
VBC10	10	125.00	35.0	3856 0010



Model	VBC 1	VBC 2	VBC 3	VBC 5	VBC 10	
Flange Width (mm)	75-220	75-220	80-320	80-320	80-350	
Dimensions (mm)	A (maximum)	260	260	354	354	400
	B (minimum)	180	180	235	235	250
	B (maximum)	360	360	490	490	520
	C	64	74	103	110	120
	D	5	6	8	10	12
	E	215	215	260	260	280
	F (maximum)	155	155	225	225	230
	F (minimum)	102	102	140	140	160
	G (minimum)	25	25	45	45	70
H	22	22	24	28	44	

### Installation:

***THE INSTALLATION of beam clamps must be performed by qualified riggers. To attach clamps to a beam, open the jaws, slide the clamp over the flange and tighten the locking bar.***

### Warning:

**FAILURE TO OBSERVE these warnings may result in serious injury or death!**

- These Beam Clamps are designed as an Anchor Point for straight vertical lifts only and **MUST NOT BE USED** in case of side pulls or where the angle of a vertical lift exceeds 3 degrees
- **NEVER EXCEED WORKING LOAD LIMITS**
- **NEVER LIFT LOADS OVER PEOPLE**
- **DO NOT USE these beam clamps:**
  - unless the beams have been tested and approved for attaching lifting devices
  - unless the size range of the clamp corresponds with the size of the beam flange
  - without making sure that they are fully tightened and properly engaged to support the load
  - without making sure that the beams' load rating exceeds the load rating of the beam clamp
  - without closely inspecting for signs of wear or damage prior to use
  - if the load swings during the lifting operation

## VH CABLE PULLERS

Cable pullers are very versatile tools which are commonly used on construction sites, for laying of large pipes, installation and adjustments of machines, loading and unloading heavy and bulky goods, tensioning cables, tower erecting, stacking of forest products and the removal of obstacles.

- Compact, light weight units
- Extendable operating lever included with all units
- Low maintenance requirements
- Units are supplied without cable assembly
- Aluminum-alloy housing
- Heavy duty design, ensures a long and reliable service life
- Designed to operated in any position to lift, pull or lower materials
- The front and back clamping system provide a large surface contact area which evenly distributes the cable grip reducing cable wear while maximizing user safety
- The rope clamping system can be disengaged which offers smooth and easy installation of the cable assemblies
- Auto adjust device as a standard
- Standard overload protection for increased operator safety
- Specially built in shear pins can be replaced without removing the load



Model No.	Lifting Capacity (tons)	Pulling Capacity (lbs)	Rope advance per full stroke (inches)	Lever pull at WLL (lbs)	Weight (without cable) (lbs)	Vanguard Code
VH-008	0.8	2,750	2.36	55	15	3860 0008
VH-016	1.6	5,500	2.36	66	31	3860 0016
VH-032	3.2	11,000	1.57	110	51	3860 0032

Parts List Description	Vanguard Code
Shear Pins for VH-008	3860 1608
Shear Pins for VH-016 & VH-0032	3860 1632
Anchor Bolts for VH-008	3860 0908
Anchor Bolts for VH-016	3860 0916
Anchor Bolts for VH-032	3860 0932

Parts List Description	Vanguard Code
Telescopic Handle for VH-008	3860 3008
Telescopic Handle for VH-016 & VH-0032	3860 3032
Name Plates/Tags VH-008	3860 4708
Name Plates/Tags VH-016	3860 4716
Name Plates/Tags VH-032	3860 4732

## CABLE ASSEMBLY

- Cable assemblies come complete with alloy hook and latch
- Galvanized cable offers excellent corrosion resistance and longer service life
- Reusable reel

Description	Weight (lbs)	Vanguard Code
5/16" x 66'	16	3860 0108
7/16" x 66'	30	3860 0116
5/8" x 66'	46	3860 0132



Custom lengths available upon request

Warning:

**FAILURE TO OBSERVE these warnings may result in serious injury or death!**

- **ALWAYS** inspect units and cable assemblies frequently for signs of wear or damage
- **NEVER** use for man-riding
- Cable pullers should only be operated by properly trained personnel

# MATERIAL HANDLING

## VCT-B SWIVEL STYLE CARGO TROLLEY

VCT-B Cargo Trolleys offer a safe and economical means of moving/transporting heavy products. They are available in 6, 8, 12 and 18 Metric Ton capacities.

### Trolley Features:

- Units come with steel wheels
- Non marking polyurethane wheels also available
- Heavy duty compact construction provides a long reliable service life
- Closed sealed bearings which provide smooth operation and an excellent service life
- Low unit height makes these units ideal for almost any application



VCT-B Trolley Specifications					
Vanguard Code		3857 9008		3857 9018	
Capacity Metric Tons (t)		6	8	12	18
Length	mm	298	398	498	498
	inches	11.74	15.67	19.61	19.61
Width	mm	222	222	222	312
	inches	8.74	8.74	8.74	12.28
Height	mm	110	110	110	110
	inches	4.33	4.33	4.33	4.33
Weight	kgs	15.5	22.5	29.5	43.5
	pounds	34.14	49.56	64.98	95.82

\* 6T and 12T units are not standard stock items

## HANDLES FOR VCT-B SWIVEL STYLE CARGO TROLLEYS

Description	Vanguard Code
Handle for 6, 8 & 12 Ton Trolley	3857 9108
Handle for 18 Ton Trolley	3857 9118



## POLYURETHANE WHEELS (PU)

- Fits all capacity of VCT-B cargo trolleys

6t unit requires 4 PU wheels      12t unit requires 8 PU wheels  
 8t unit requires 6 PU wheels      18t unit requires 12 PU wheels

Description	Vanguard Code
PU Wheels	3857 9101



Warning:

**FAILURE TO OBSERVE these warnings may result in serious injury or death!**  
**NEVER EXCEED WORKING LOAD LIMITS!**  
 Inspect all components frequently for signs of wear or damage  
 Cargo Trolleys should only be used/installed by qualified/properly trained personnel



DRUM LIFTERS

- Compact light weight design
- All steel construction
- Designed to lift drums with or without lids. The clamps use the drums edge for lifting
- Grade 80 chain



Chain Specifications		Net Weight		Vanguard Code
Size	Length	Kgs	Lbs	
6 x 18mm	500mm / 19.69"	3.60	7.93	3808 9001



## CONVERSIONS

To Convert	Multiply By	To Obtain	To Convert	Multiply By	To Obtain
Miles (statute)	1.609	Kilometers	0.621		Miles (statute)
Yards	0.914	Meters	1.094		Yards
Feet	0.305	Meters	3.281		Feet
Inches	25.400	Millimeters	0.039		Inches
Short Tons	0.907	Metric Tons	1.102		Short Tons
Long Tons	1.016	Metric Tons	0.984		Long Tons
Pounds	0.454	Kilograms	2.205		Pounds
Pounds	0.00444	Kilo newtons	224.8		Pounds
Pounds per Foot	1.488	Kilos per Meter	0.672		Pounds per Foot
Pounds per sq. ft.	4.882	Kilos per sq. m	0.205		Pounds per sq. ft.
Pounds per sq. in.	0.070	Kilos per sq. cm	14.223		Pounds per sq. in.
Square Inches	645.200	Sq. Millimeters	0.002		Square Inches
Cubic Inches	16.387	Cubic Centimeters	0.061		Cubic Inches
Cubic Feet	0.028	Cubic Meters	35.310		Cubic Feet
Cubic Yards	0.765	Cubic Meters	1.308		Cubic Yards
U.S. Gallons	3.785	Liters	0.264		U.S. Gallons
Imperial Gallons	4.546	Liters	0.220		Imperial Gallons
Cubic Feet	28.320	Liters	0.035		Cubic Feet
Diameter	3.142	Circumference	0.318		Diameter
Deg. Fahrenheit	$.5556 \times (F^{\circ} - 32)$	Degrees Celsius	$(1.8 \times C^{\circ}) + 32$		Deg. Fahrenheit
1 Statute Mile -	1760 Yards -	5280 Feet -	1.60934 Km		
1 Nautical Mile -	6080 Feet -	1.85318 Km			
1 Fathom -	6 Feet -	1.82880 Meters			
1 Rod -	5.5 Yards -	16.5 Feet -	5.02919 Meters		